

PASS THE TORCH: TOGETHER, WE WILL CARRY THE FLAME



RICE | BUSINESS  
**WOMEN IN  
LEADERSHIP  
CONFERENCE**  
**2026**

**FEBRUARY 27, 2026 • MCNAIR HALL, RICE UNIVERSITY**

6:45 – 8:00 AM	<b>REGISTRATION AND BREAKFAST</b>	Jamail Plaza
8:15 – 9:30 AM	<b>WELCOME AND OPENING REMARKS</b> Isamar Lopez-Veracruz – 2026 Women in Leadership Conference President Constance Elise Porter – Senior Associate Dean for Belonging and Engagement & Associate Clinical Professor of Marketing, Rice Business <b>OPENING KEYNOTE SPEAKER</b> Kathleen Barrón – Executive Vice President and Senior Advisor to the CEO, Constellation Energy	Shell Auditorium
9:30 – 9:50 AM	<b>BREAK</b>	
9:50 – 10:45 AM	<b>MORNING PANELS I</b> <b>Lift While You Climb: Why Mentorship Matters</b> Nikki Suarez – Community Engagement Manager, Americas, S&P Global   Pamela Rafferty – Carbon Materials Venture Executive, ExxonMobil   Kim Head – SVP, Global Commercial Operations, Phillips 66   Guinevere Basnight – Communications Senior Director, North America, Tenaris   Krista Long – Division President, David Weekley Homes <b>Power in the Crossover</b> N. Brenda Adimora – Associate Attorney, Littler Mendelson P.C.   Arianne Dowdell – Vice President, Chief Culture & Engagement Officer, Houston Methodist   Brooke Grammier – Chief Information Officer, CannonDesign   Sadie Rucker – President and Founding Principal, Horizon International Group, LLC   Cecilia Prieto – President Well Construction, SLB	Anderson Family Commons  Shell Auditorium
10:45 – 11:05 AM	<b>BREAK</b>	
11:05 AM – 12:00 PM	<b>MORNING PANELS II</b> <b>The Unfiltered Resume</b> Mitra Murthy – Banker, J.P. Morgan Private Bank   Nishita Singh – Vice President and General Manager, Corpus Christi Liquefaction, Cheniere   Jessica Bolaños – Co-Founder & CEO, Director of Digital and Impact, Goodspero   Shawnie McBride – Senior Vice President, Commercial Operations, NRG Energy   Gabriela Gerhart – Founder & CEO, Motherhood Center <b>Be the Why: The Reason Leaders Believe They Can</b> Dana Vazquez – Strategy and Planning Manager, Digital Impact Office, Cisco   Jennifer Gregg – Vice President of Farm Operations, Vital Farms   Megan Gresham – Chief Financial Officer, IKAV Energy   Janet DeLeon Young – Executive Director, The H.E.A.R.T Program   Kelly Woodward – Chief Operating Officer, Houston Airport System <b>It Wasn't a Straight Line: Nonlinear Career Stories</b> Ty'Meka Reeves-Sobers – Partner, Clifford Chance   Melissa Mohr – Senior Vice President, Vivint   Ketrese White – President West Campus & South Region; The Woodlands & North Region, Texas Children's Hospital   Roxanna Jansen – Director of Finance, Aramco Americas, Aramco   Rose Hochner Nelson – Senior Vice President, Marketing & Communications and Chief of Staff to the President, UTHealth	Classroom 212  Anderson Family Commons  Shell Auditorium
12:00 – 1:10 PM	<b>NETWORKING LUNCH</b>	Jamail Plaza
1:10 – 2:10 PM	<b>AFTERNOON WORKSHOPS</b> <b>Own Your Impact: Using Strategic Storytelling to Build a High-Authority Professional Pitch, Sponsored by SheSpace</b> Stephanie Tsuru – Co-Founder & CEO, SheSpace <b>Interactive Leadership Coaching</b> Ruth Reitmeier – Director of Coaching, Rice Business <b>The Visual Resume: Branding and Personal Style for Impact</b> Janet Moore – Senior Lecturer and Director, Management-Communication, Rice Business <b>AI, But Make It Work for You, Sponsored by HP Inc.</b> Paola Mariani – Senior Manager, AI Experiences, HP Inc.   Janet Graff – Senior Manager of Commercial Quality and Customer Experience, HP Inc.   Ann Lai – ARM Business Leader, Personal System, HP Inc.   Leng Lim – VP of HP Design Engineering, HP Inc.   Jeri Callaway – Head of HP Strategic Alliances, HP Inc.   Jinyu Mao – Senior Director of Product Planning & AI Experiences, HP Inc. <b>Negotiate to Yes</b> Daniela George – Global Strategy & Business Development Director, Partnerships & Alliances, Baker Hughes   Carmalita Deeton – Senior Innovation Leader, Amazon Web Services   Alex Farias-Sorrels – Partner, Sorrels Law   Robin Russell – Deputy Managing Partner, Hunton   Judith Hayes – Chief Science Officer, NASA	Classroom 212  Classroom 214 Classroom 216  Anderson Family Commons  Shell Auditorium
2:10 – 2:30 PM	<b>BREAK</b>	
2:30 – 3:30 PM	<b>AFTERNOON KEYNOTE SPEAKER</b> Madeline Haydon – Founder, nutpods <b>CLOSING REMARKS &amp; OWL AWARD</b> Peter Rodriguez – Houston Endowment Dean of Jones Graduate School of Business and Virani Undergraduate School of Business, Rice Business	Shell Auditorium
3:30 – 4:40 PM	<b>RECEPTION AND NETWORKING</b>	Jamail Plaza



On behalf of the 2026 Women in Leadership Conference Planning Committee, we are delighted to welcome you to this year's conference. This year's theme, *Pass the Torch: Together, We Will Carry the Flame*, invites us to reflect on those who paved the way for us and encourages us to become role models for those who follow. This conference represents a year of reimagining the future of leadership and celebrating the strong community built around the Women in Leadership Conference. We have created space for leaders to grow, experiment, learn and lead together.

The Women in Leadership Conference stands for leadership that moves the world forward and redefines success. We thank our speakers for sharing their insight and leadership, our sponsors for their generosity, and the Rice Business community, including staff, students, alumni and faculty, for their continued support. As you join this community, we hope today inspires you to lead with purpose, to learn from one another and to carry forward the legacy of impactful leadership.

With gratitude,  
The 2026 Women in Leadership Conference Planning Committee

## EXECUTIVE COMMITTEE



**ISAMAR LOPEZ-VERACRUZ**  
President



**CAROLINE METTS**  
External Relations Chair



**SYLVIA LIAW**  
External Relations Chair



**SIERRA FREDENRICH**  
Finance Chair



**RAABIA BADAT**  
Internal Relations Chair



**LIPI GANDHI**  
Marketing Chair



**JENNIFER FOMUNUNG**  
Operations Co-chair



**AIMEE MAGAÑA PELAYO**  
Operations Co-chair

## GENERAL COMMITTEE



**ASHLEY HINES**  
External Relations Committee



**YARA KADRIA-VILI**  
External Relations Committee



**VICTORY ONYEKWERE**  
External Relations Committee



**PARUL CHAUBE**  
External Relations Committee



**EMILY SMITH**  
External Relations Committee



**MARTA ANTONIV**  
External Relations Committee



**ILLANDERE CHO**  
Finance Committee



**KAYLA WILLIAMS**  
Finance Committee



**PHUONG LE**  
Finance Committee



**LIBBY WEYEL**  
Finance Committee



**MICHELLE KHAN**  
Internal Relations Committee



**AMY LAO**  
Internal Relations Committee



**PRERNA PISAL**  
Internal Relations Committee



**JOY AHN**  
Internal Relations Committee



**ALI DUPNICK**  
Marketing Committee



**ANGELICA CHAPARRO**  
Marketing Committee



**MORIAH SHAW**  
Marketing Committee



**MUSKAAN DUA**  
Marketing Committee



**JENNIFER HO**  
Marketing Committee



**GARIMA MEHRA**  
Operations Committee



**LC DY**  
Operations Committee



**CAITLIN FABIAN**  
Operations Committee



**BUKKY ODUMOSU**  
Operations Committee



**ALINA SYED**  
Operations Committee

## KEYNOTE SPEAKERS



### **KATHLEEN BARRÓN – MORNING KEYNOTE SPEAKER** Executive Vice President and Senior Advisor to the CEO, Constellation Energy

Kathleen Barrón serves as executive vice president and senior advisor to the CEO for Constellation, America's largest producer of reliable and clean energy. She serves on the Constellation Executive Committee and has announced plans to retire in 2026 after 30 years in the energy industry. Following 10 years in private legal practice and five years in the federal government, Kathleen joined Constellation's predecessor company in 2010 and held numerous senior leadership roles, including chief strategy and growth officer, where she was responsible for corporate strategy, corporate development, sustainability, communications, marketing and philanthropy. Previously, Kathleen was deputy general counsel at the Federal Energy Regulatory Commission. She serves on the board of directors for the Keystone Policy Center and the Baltimore Waterfront Partnership, and chairs the Constellation Foundation board. Kathleen holds degrees from American University and the University of Houston Law Center.



### **MADELINE HAYDON – AFTERNOON KEYNOTE SPEAKER** Founder, nutpods

Madeline Haydon is founder of nutpods, one of the leading brands of better-for-you coffee creamers. Initially launched as a Kickstarter project, nutpods debuted at No. 13 on Inc. 5000's list of fastest-growing companies and was named Amazon "Small Business of the Year" (both in 2019). The company was successfully sold in 2024. Madeline is a recognized business leader featured in Inc. Magazine's Female Founders 200 (2023), named Ernst & Young's Entrepreneur of the Year (2019), and profiled by Forbes in "Meet the Women Leading the Future of Food" (2017). A proud Seattleite, Madeline holds a bachelor's degree from the University of Washington and an MBA from Seattle University. She currently serves on private boards and is a frequent public speaker.

## FEATURED SPEAKERS



### **CONSTANCE PORTER** Senior Associate Dean for Belonging and Engagement & Associate Clinical Professor of Marketing, Rice Business

Constance Porter is the senior associate dean for belonging and engagement and associate clinical professor of marketing at Rice Business. She has served as senior associate dean since 2021, teaches various marketing courses and has published in premier academic journals over the years. Prior to joining Rice, she taught at University of Notre Dame's Mendoza College of Business. Constance earned a bachelor's degree in economics from the Wharton School at the University of Pennsylvania, an MBA from University of Michigan and a Ph.D. from Georgia State University. Prior to pursuing a career in academia, she spent several years as a management consultant and commercial banker.

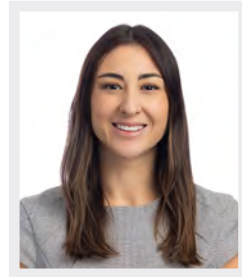


### **DEAN PETER RODRIGUEZ** Houston Endowment Dean of Jones Graduate School of Business and Virani Undergraduate School of Business and Professor of Strategic Management, Rice Business

Peter Rodriguez is the Houston Endowment Dean of the Jesse H. Jones Graduate School of Business and the Virani Undergraduate School of Business at Rice University. He is an economist and professor and teaches classes on macroeconomics, economic growth and development. He was previously a professor and senior associate dean for MBA programs at the Darden School of Business at the University of Virginia, a lecturer at Princeton University and a professor at the Mays School of Business at Texas A&M University. He currently serves as chair of the board of directors of the Federal Reserve Bank of Dallas, Houston Branch. Peter holds a master's degree and Ph.D. in economics from Princeton University and a bachelor's degree in economics from Texas A&M University.

## LIFT WHILE YOU CLIMB: WHY MENTORSHIP MATTERS

Hear inspiring women leaders reflect on the mentorship moments that influenced their growth and leadership paths. This session explores how women can intentionally pay it forward through advocacy, sponsorship and creating opportunities for others to thrive.



### NIKKI SUAREZ

**Community Engagement Manager, Americas, S&P Global**

Nikki Suarez leads strategic community engagement initiatives across the Americas at S&P Global, where she designs AI-driven, human-centered programs that foster meaningful connections and measurable business impact. Her work sits at the intersection of customer experience, community building and innovation. Nikki serves on the board of the LatinxMBA Association and Be Peace - Be Hope, and she volunteers with the Houston Livestock Show and Rodeo. She earned her MBA from Rice Business in 2024, where she received the M.A. Wright Award and the Outstanding Woman in Leadership Award for her contributions to leadership, mentorship and community engagement. Her career spans corporate, nonprofit and higher education environments, unified by a passion for building inclusive communities and connecting people to opportunities where they can thrive.



### PAMELA RAFFERTY

**Carbon Materials Venture Executive, ExxonMobil**

Pamela Rafferty is leading a transformational new venture for ExxonMobil that converts carbon-rich feeds from the refining process into high-value graphite products for the battery industry. She guides complex initiatives, strengthens organizational culture and drives operational excellence across diverse teams and portfolios. Her career spans more than two decades of global experience, including major project development in the U.S., U.K. and Singapore, extensive interface coordination across international engineering teams, commercial strategy leadership and large-scale organizational transformation. Pamela began her journey as a chemical engineering co-op while studying at the University of Cincinnati, grounding her career in hands-on operations and a deep commitment to service through community outreach, volunteer work and leadership in local organizations. She lives in Houston with her husband, Brian, and is an avid traveler and enthusiastic explorer of new cultures, food and experiences.



### KIM HEAD

**SVP, Global Commercial Operations, Phillips 66**

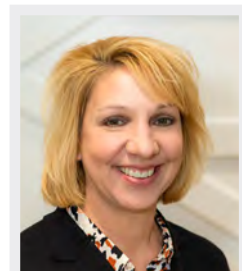
Kimberly Head serves as senior vice president of global commercial operations for Phillips 66, a leading integrated downstream energy provider. With more than 25 years of energy industry expertise, Kimberly brings deep knowledge of commodity trading, asset optimization and operations management. In her current role, she leads a global team responsible for coordination of global supply chain operations, ensuring efficient movement of crude oil and refined products across domestic and international markets. Most recently, Kimberly led global trading operations as vice president in Houston, Texas. Before that, she served as general manager of global crude trading and London lead executive. Her commercial leadership experience also includes managing NGL trading and scheduling, overseeing distillate trading for the Americas, and leading natural gas trading for the Midcontinent region. She holds a bachelor's degree in chemical engineering from the Missouri University of Science and Technology.



### GUINEVERE BASNIGHT

**Communications Senior Director, North America, Tenaris**

Guinevere Basnight serves as senior director of communications for North America at Tenaris, a leading global supplier of steel pipes for the energy sector. With more than 20 years of experience in employee and marketing communications and media relations, she has developed messaging strategies, audiovisual productions and commercial campaigns for international audiences and has supported executive leadership during periods of transformation and growth, including several substantial acquisitions and the construction of a greenfield steel pipe facility in Bay City, Texas. She also worked as an arts and culture reporter at the Buenos Aires Herald in Argentina. Guinevere holds a degree in Latin American literature from Sarah Lawrence College and a postgraduate degree in journalism. Outside of work, she enjoys spending time with her three children.



### KRISTA LONG

**Division President, David Weekley Homes**

Krista Long serves as division president for David Weekley Homes in Charlotte, North Carolina. The company has earned a place on the Fortune 100 "Best Companies to Work For" list 19 times, including a No. 19 ranking in 2025. Krista has 30 years of experience in the homebuilding industry, including 25 years with two public homebuilders prior to joining David Weekley Homes. She holds real estate broker licenses in North and South Carolina and has a strong history of industry leadership. Krista was the third woman to serve as president of the Greater Charlotte Home Builders Association. She earned a bachelor's degree in business administration with a minor in communications from the University of North Carolina at Charlotte, where she was enrolled on a Division I volleyball scholarship. She currently serves on UNC-Charlotte's Athletic Foundation Board and the Niner Varsity Club Board.

## POWER IN THE CROSSOVER

Join cross-industry women leaders as they reflect on navigating identity, opportunity, and innovation in their work. This session highlights how diverse perspectives and crossover leadership shape Houston's dynamic economic ecosystem.



### N. BRENDA ADIMORA

**Associate Attorney, Littler Mendelson P.C.**

N. Brenda Adimora is an associate at Littler Mendelson, the world's largest labor and employment law firm. She represents prominent, industry-leading companies across a wide range of sectors, advising on government audits and investigations, wage and hour issues, and compliance, whistleblower and discrimination matters. Brenda previously served as chair of the board of trustees for the Houston Young Lawyers Foundation, where she played a key role in revitalizing the organization in the wake of the COVID-19 pandemic. Deeply committed to public service, she also maintains an active pro bono practice. Before joining Littler, Brenda was counsel at Susman Godfrey, a nationally recognized commercial litigation boutique. She earned her law degree from the University of Tennessee and holds dual bachelor's degrees from Clemson University.



### ARIANNE DOWDELL

**Vice President, Chief Culture & Engagement Officer, Houston Methodist**

Arianne Dowdell is the vice president and chief culture and engagement officer at Houston Methodist, where she leads the hospital's culture through system-wide engagement strategy, programming and implementation with key internal and external partners. Before joining Houston Methodist, Arianne held leadership positions at several higher education institutions, including Syracuse University and Virginia Commonwealth University. She began her career in television at Court TV and Madison Square Garden Network. A former attorney, Arianne previously practiced as a labor and employment lawyer. She holds a J.D. from Wayne State University, an M.A. from Syracuse University, and a B.A. from Hampton University. In her spare time, she serves on nonprofit boards, including Best Buddies International Advisory Board for Houston. Her work has earned recognition from Modern Healthcare, Becker's Healthcare and Women World Magazine.



### BROOKE GRAMMIER

**Chief Information Officer, CannonDesign**

Brooke Grammier is a technology executive and leader in digital transformation across the architecture, engineering and construction industry. As chief information officer of CannonDesign, she leads cross-functional teams in delivering innovative, multi-platform solutions that connect the built and digital environments. Brooke has led enterprise-scale business and digital transformation initiatives for multiple large AEC firms, combining strategic vision with hands-on execution to drive measurable results. Her work centers on integrating emerging technologies – especially data and artificial intelligence – to modernize workflows, unlock efficiencies and future-proof organizations. She also serves as executive chair of the Innovation Design Consortium, driving innovative change across the AEC industry. A passionate advocate for leadership development, Brooke is deeply committed to mentoring the next generation of technology professionals, dedicating significant time to coaching young women pursuing careers in technology.



### SADIE RUCKER

**President and Founding Principal, Horizon International Group, LLC**

Sadie Rucker, president of Horizon International Group, is a native Houstonian rooted in her support for the betterment of her hometown. She holds a bachelor's degree from Texas Southern University and a master's degree from University of Houston's College of Engineering. She is also a registered interior designer with over 30 years of experience as a project executive at Horizon. While at University of Houston, Sadie met Al Kashani, co-owner of Horizon, where they discovered mutual visions for developing growth opportunities for businesses and generating change in Houston neighborhoods. Sadie is a member of the Houston Zoo Board of Directors and the Asante Society Committee, which supports the zoo's core programs: animal care, education and conservation. She is also a member of Links Inc., Alpha Kappa Alpha Sorority and the Houston Sophisticates. She was recently recognized as an honoree of AKA's Charitable Foundation.



### CECILIA PRIETO

**President, Well Construction, SLB**

Cecilia Prieto is president of Well Construction at SLB, where she leads the global strategy, performance and operations of the division delivering industry-leading technologies and services for the design, drilling and construction of oil and gas wells. With more than 25 years of experience in the energy sector, she has held senior leadership roles across engineering, manufacturing, research and development, and operations. She previously led Well Construction Measurements, SLB's largest business line. Cecilia has managed organizations across North and South America and Europe and has served on the company's leadership team. She holds bachelor's and master's degrees in mechanical engineering from MIT and is a named inventor on patents for advanced well construction and downhole technologies. She is recognized for driving innovation by aligning technology, digital capabilities and operations with business strategy.

## THE UNFILTERED RESUME

This live storytelling session pulls back the curtain on the career moments leaders don't usually share. By unpacking failures, detours, and pivots, the conversation reframes imperfection as a catalyst for growth and leadership.



### MITRA MURTHY

Banker, J.P. Morgan Private Bank

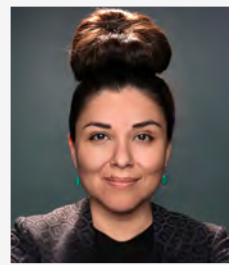
Mitra Murthy is a Houston native with a lifelong passion for the arts. After studying art history at The George Washington University, she earned her master's degree in art business from Sotheby's Institute of Art in New York, where she went on to spend six years at Christie's, specializing in working with large estates and multi-category collections. In 2020, Mitra returned to Houston and launched an independent art advisory firm, working closely with collectors to build and manage their private collections. She later earned her MBA from Rice Business, where she was introduced to JPMorgan Private Bank. She brings a unique blend of art world insight and financial strategy to her role. Mitra lives in Montrose with her husband and their Keeshond, Chauncey. She serves on the boards of Art League Houston and the Houston Public Library Foundation.



### NISHITA SINGH

Vice President and General Manager, Corpus Christi Liquefaction, Cheniere

Nishita Singh has served as vice president and general manager of Corpus Christi Liquefaction since July 2024. In her role, she manages, directs and oversees all aspects of the company's liquefied natural gas export terminal in Gregory, Texas. Nishita brings 17 years of operational and leadership experience to the role, including the past 10 years at Cheniere, most recently as vice president of operations support. Before joining Cheniere, she held global roles in the oil and gas, power and aviation industries. Nishita is passionate about STEM programs and is committed to nurturing the next generation of engineers. She actively engages in initiatives that encourage and inspire young minds to pursue engineering careers. She holds a bachelor's degree in mechanical engineering from the University of Massachusetts - Amherst.



### JESSICA BOLAÑOS

Co-Founder & CEO, Director of Digital and Impact, Goodspero

Jessica Bolaños runs a Houston-based video marketing agency that helps impact-driven organizations increase visibility and awareness through storytelling and strategic content. A first-generation Colombian American, Jessica brings over 20 years of experience spanning marketing, media and social entrepreneurship. Her career began as an independent brand ambassador and market manager for Fortune 100 and 500 brands including L'Oréal, Dodge/Chrysler and Anheuser-Busch, later evolving into a creative strategist serving CEOs, nonprofit leaders and venture capitalists. Since co-founding Goodspero in 2014, she has led projects for clients including the city of Houston, Impact Hub Houston, Google, BakerRipley, The Ion and the University of Houston's Wolff Center for Entrepreneurship. Jessica is also a mentor for the Wolff Center at UH, REDSpark accelerator and Empowering Women Out of Prison, and supports women entrepreneurs globally through KIVA.



### SHAWNIE MCBRIDE

Senior Vice President, Commercial Operations, NRG Energy

Shawnie McBride serves as senior vice president of commercial operations at NRG, leading commodity trading, portfolio optimization and market risk strategy. With extensive experience in energy markets, Shawnie drives commercial decision-making across asset optimization, hedging and market positioning to maximize value through changing market conditions. Her leadership emphasizes disciplined risk management, data-driven trading strategies and aligning the commercial portfolio with NRG's long-term objectives. Previously, she served as NRG's chief risk officer and led sales operations for NRG Business. Before joining NRG, she was chief risk officer at Direct Energy, overseeing development and implementation of the company's risk management program. With over 25 years in energy markets, Shawnie has held leadership roles across risk management, technology, sales operations and wholesale trading. She earned a bachelor's degree in business administration in finance from Texas A&M University.



### GABRIELA GERHART

Founder & CEO, Motherhood Center

Gabriela Gerhart is the founder of Motherhood Center, a Houston-based pregnancy, postpartum family wellness center and professional childcare agency she established in 2000. Born and raised in a small village in the Czech Republic, her passion for families and caregiving began early and evolved into a lifelong calling rooted in community, connection and compassionate support. With backgrounds in pediatric nursing and physical therapy and early experience working in a pediatric emergency room, Gabriela later moved to the United States as an au pair, an experience that revealed a critical gap in support for pregnant women and new mothers. That insight became the foundation for Motherhood Center, which now offers comprehensive services including nanny placements, newborn care specialists, doulas, education classes, prenatal and postpartum therapies, exercise programs and breastfeeding support.

## BE THE WHY: THE REASON LEADERS BELIEVE THEY CAN

A legacy-focused conversation on purpose, impact, and the personal motivations behind women's leadership journeys. This panel highlights how leading with intention creates belief, momentum and lasting influence.



### DANA VAZQUEZ

Strategy and Planning Manager, Digital Impact Office, Cisco

Dana Vazquez is an impact and strategy professional working at the intersection of sustainability, ESG and corporate purpose. She holds her MBA from Rice Business and her undergraduate degree from Emory University, with a focus on corporate sustainability and ethics. Dana has worked across global organizations including The Walt Disney Company, ERM and Cisco Systems, where she currently supports teams within Cisco's Purpose organization on strategy, planning Human Resources and talent planning, and currently leads recruiting for Cisco's FLEX program, focusing on developing undergraduate and MBA-level talent for the HR organization. Dana is also a co-founder at an early-stage startup, Coflux Purification, which is focused on industrial water remediation. In her free time, she enjoys concerts, traveling, thrifting and exploring Houston's food scene.



### JENNIFER GREGG

Vice President of Farm Operations, Vital Farms

Jennifer Gregg serves as vice president of farm operations and innovation at Vital Farms, where she leads transformational change grounded in purpose, heart and a deep belief in the power of people. With 20 years of experience in human resources and the last eight in operations, Jennifer helps individuals and teams overcome real and perceived challenges, fueling growth, collaboration and innovation. She has a proven track record of building resilient teams, driving operational excellence and fostering cultures of trust and innovation. Thriving at the intersection of people and process, Jennifer leverages her HR expertise to create environments where individuals can grow, and organizations can thrive. She is passionate about lifting others, mentoring women to lead authentically, and championing bold, values-driven leadership. Jennifer brings a grounded, people-first approach to navigating complexity and is honored to share her journey as part of this panel.



### MEGAN GRESHAM

Chief Financial Officer, IKAV Energy

Megan Gresham joined IKAV, a privately held European renewables investment firm, in 2020 to build the company's U.S. oil and gas practice after its first acquisition. Over her tenure, Megan has led the U.S. team through six transactions including acquiring Aera (more than \$4 billion), merging it with California Resources Corp. (more than \$2 billion), and selling its San Juan assets to Mach Natural Resources (more than \$780 million). Previously, Megan was director at Wells Fargo Securities Energy Investment Banking and held various accounting and finance roles at Anadarko Petroleum Corp. Megan holds a CPA in the state of Texas, an MBA from Rice University and a bachelor's degree in finance and accounting from the University of Houston. She lives in Houston with her husband and three children.



### JANET DELEON YOUNG

Executive Director, The H.E.A.R.T Program

Janet Deleon Young brings more than two decades of mission-driven leadership across Greater Houston's nonprofit landscape. A bilingual professional and award-winning communicator, she has dedicated her career to empowering underserved communities through early childhood development, parenting, adult education and other vital social services. She serves as executive director of The HEART Program, an organization providing innovative training and employment opportunities to adults with intellectual and developmental disabilities. Previously, Janet served as executive director of Love Fosters Hope, leading programs supporting children and youth in foster care impacted by trauma, and as chief development and communications officer at AVANCE-Houston and Santa Maria Hostel. Janet graduated from the University of Houston. She is married with a 22-year-old daughter.



### KELLY WOODWARD

Chief Operating Officer, Houston Airport System

Kelly Woodward is chief operating officer for the Houston Airport System, bringing over two decades of aviation management experience across public and private sectors. She oversees execution of Houston Airports' strategic initiatives, ensures five-star performance at Bush and Hobby airports, enhances efficiency across all divisions and maintains operational excellence throughout the system. Most recently, Kelly served as a managing director with AvAirPros in Houston, where she led operational readiness efforts for the IAH Terminal B Transformation. She previously spent more than 20 years with Houston Airports, holding leadership positions in operations, contract services and custodial services, and serving as interim general manager of Bush Airport. She holds master's and bachelor's degrees in aeronautical science from Embry-Riddle Aeronautical University, along with an FAA commercial pilot/flight instructor certificate. She is a certified member of the American Association of Airport Executives.

## IT WASN'T A STRAIGHT LINE: NONLINEAR CAREER STORIES

Women leaders reflect on the twists and turns that shaped their careers, from pauses to pivots to full reinventions. This session destigmatizes imperfect journeys and highlights how nonlinear paths build resilience, clarity, and confidence.



### TY'MEKA REEVES-SOBERS

Partner, Clifford Chance

Ty'Meka M. Reeves-Sobers leads the Clifford Chance U.S. environmental practice, advising clients across a variety of industries and sectors. She has extensive experience identifying, evaluating and mitigating EHS regulatory and compliance issues, navigating permitting processes, and developing strategies on enforcement action negotiations and environmental incident response. Ty'Meka holds a bachelor's degree from Ursuline College and a law degree, with honors, from the University of Texas Law School. She is admitted in Texas. She has been recognized for environment, mainly transactional (Texas) by Chambers USA, named 2023 environmental rising star by Law360 and recognized in The Legal 500 US for environment transactional.



### MELISSA MOHR

Senior Vice President, Vivint

Melissa Mohr is senior vice president of product at Vivint, where she leads overall smart home product strategy spanning energy, cameras, security and AI strategy. Previously, she spent 13 years at Amazon, most recently as director on the Alexa Smart Home business leading product, business, marketing and engagement. While at Amazon, she also launched the Amazon.ca toys business and worked on growing the Amazon.com grocery business. In addition to her work, Melissa is dedicated to empowering women in the workplace and is actively involved in several mentoring groups and organizations focused on developing and supporting women in technology. Beyond her professional achievements, Melissa is an avid equestrian, competing in three-day eventing with her horse, Ferrani, and spending time with her two border collies, Echo and Cash.



### KETRESE WHITE

President West Campus & South Region; The Woodlands & North Region, Texas Children's Hospital

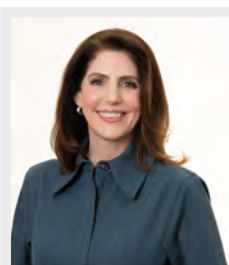
Ketrese White is a distinguished healthcare executive with over 26 years of experience. As president of Texas Children's Hospital - West Campus and Texas Children's Hospital - The Woodlands, she oversees all hospital, ambulatory and specialty care therapy operations across both regions. Ketrese has been instrumental in advancing the hospital's mission to enhance the health and well-being of children, women and families locally and globally. Her career began as a graduate nurse in the Bone Marrow Transplant Unit at Texas Children's Cancer and Hematology Center. She has held progressively senior roles and played an instrumental role in launching Texas Children's community hospitals, driving expansion across the West, South and North regions. She holds a bachelor's degree in nursing from Prairie View A&M University, a master's degree in healthcare administration from Houston Christian University and a doctorate of nursing practice from The University of Texas Health Science Center at Houston.



### ROXXANNA JANSEN

Director of Finance, Aramco Americas, Aramco

Roxxanna Jansen is director of finance for Aramco Americas, the U.S.-based subsidiary of Saudi Aramco, a global leader in integrated energy and chemicals. She oversees various financial functions including accounting, payroll, corporate tax, and banking and investments. Roxxanna ensures financial integrity working with teams to manage capital, formulate and direct financial strategy, analyze budgets and offer guidance on financial decisions. Prior to her current assignment, she served as chief auditor for Aramco Trading Americas, where she worked closely with law, compliance and across the entire organization to ensure recommendations aligned with regulatory requirements and company objectives. Before joining the company, she worked for PricewaterhouseCoopers. A graduate of Trinity University in San Antonio, Texas, Roxxanna earned both a bachelor's and master's degree in accounting. She is a certified public accountant, certified internal auditor and certified information systems auditor.



### ROSE HOCHNER NELSON

Senior Vice President, Marketing & Communications and Chief of Staff to the President, UTHealth

Rose Hochner Nelson is a senior executive in higher education and health care marketing, serving UTHealth Houston as senior vice president of marketing and communications and chief of staff to the president. She oversees marketing, branding, and internal and external communications while partnering with executive leadership to advance the university's strategic direction. Rose has led UTHealth Houston's first comprehensive marketing campaign, a major universitywide brand refresh and its inaugural national brand elevation campaign. Before joining UTHealth Houston, she gained early leadership experience in education and program management at Mission Mountain School in Montana and later worked in fundraising at the Alley Theatre and as an account executive at 20K Group. She holds an MBA from Rice University and a bachelor's degree from Duke University.

## OWN YOUR IMPACT: USING STRATEGIC STORYTELLING TO BUILD A HIGH-AUTHORITY

Often misperceived as a "soft skill," storytelling is a critical leadership capability. This experience-based storytelling workshop shows participants how to translate their real-world work into a clear, confident professional pitch that builds authority, recognition and respect.



### STEPHANIE TSURU

Cofounder and CEO, SheSpace

Stephanie Tsuru spent 25 years in the healthcare industry before receiving a Master of Liberal Studies at Rice University. Energized by the strength and potential of women, she co-founded SheSpace, a female-focused collaborative work and programming space that helps advance women's social and professional networks and careers. Passionate about local philanthropy, Stephanie is president of the Houston Ballet Board and a recent co-chair of the Hermann Park Commons Capital Campaign with Hermann Park Conservancy Board. She continues to indulge her fondness for lifelong learning by completing courses like the Rice Leadership Accelerator and the American Leadership Forum, Class LV. Outside of her empowering work with SheSpace, she is a proud wife, mother and grandmother to five grandchildren.

## INTERACTIVE LEADERSHIP COACHING

Designed as both a workshop and a live coaching experience, this session begins with leadership insights and tools from an experienced coach. Attendees then bring forward real challenges and receive personalized, real-time guidance in a supportive, high-impact setting.



### RUTH REITMEIER

Director of Coaching, Rice Business

Ruth Oh Reitmeier is an executive coach, consultant and keynote speaker with over 25 years of experience developing leaders and building high-performing teams across sectors. She is valued for her cultural fluency and her compassionate yet candid approach to leader development. As director of coaching at Rice University's Jones Graduate School of Business, Ruth designs and delivers executive coaching programs for MBA students, faculty and administrators. With 10 years of experience in higher education, her work combines research and evidence-based methods with practical, results-oriented coaching. Ruth's coaching is marked by empathy and evidence-based practices, synthesizing data and lived experience into actionable insights. She creates a safe but challenging space where leaders build self-awareness and situational awareness. Ruth helps leaders achieve sustainable growth and behavioral changes that align individual, team and organizational goals, with a focus on developing courage and clarity to navigate high-pressure environments.

## THE VISUAL RESUME: BRANDING AND PERSONAL STYLE FOR IMPACT

Make your first impression count, whether on LinkedIn, Zoom or in the room. This workshop will help you refine how others see you, with practical tools to align your online brand, physical presence, and personal style with your career goals.



### JANET H. MOORE

Director of Communication Program, Senior Lecturer in Management, Rice Business

Janet H. Moore has over 25 years of global professional experience across North and South America, Africa, Asia, Europe and the Middle East. As the director of the communication program and senior lecturer in management at Rice Business, she enjoys researching the intersection of authenticity, leadership communication and personal style. Janet's teaching specialties include executive presence, personal branding and leadership communication. As a professionally trained and certified executive coach, she has worked with professionals at companies like Accenture, ConocoPhillips, Goldman Sachs and KPMG. She also spent the first 15 years of her career practicing international business law. Janet attended the London School of Economics and graduated with honors from both Georgetown University's School of Foreign Service and the University of Texas School of Law.

## AI, BUT MAKE IT WORK FOR YOU

A practical conversation on navigating, leveraging, and leading in the age of AI. Experts highlight real-world tools, ethical implications and strategies for staying future-ready as technology continues to evolve.



### PAOLA MARIANI

Senior Manager, AI Experiences, HP Inc.

Paola Mariani is a senior manager of HP's AI experiences team within the commercial PCs business. She drives HP's commercial AI value proposition and the adoption of next-generation AI PCs, blending product innovation and storytelling to transform complex technologies into market-ready solutions that resonate with users and deliver measurable business impact. Paola earned an MBA from Quantic Business School and dual master's degrees in management engineering from Politecnico di Bari in Italy and Cranfield University in the United Kingdom. She is originally from Italy and has resided in several countries, experiences which have enhanced her dedication to travel and cultural exploration. She is presently located in Houston.



### JANET GRAFF

Senior Manager of Commercial Quality and Customer Experience, HP Inc.

Janet Graff is a senior leader with more than 28 years of experience in commercial PC quality and customer experience. Since joining HP Inc. in 1997, she has held multiple leadership roles focused on transforming customer insights into quality strategies that deliver measurable business results across global markets. She has led co-development initiatives with major technology partners, managing strategic relationships and negotiations that resulted in innovative, globally adopted supply chain models. Her work in designing quality platforms has significantly reduced annual quality issues, while her leadership in serviceability has enabled distributed engineering teams to strengthen customer retention. Janet holds a B.S. in industrial engineering from Texas Tech University and a master's degree from George Washington University. She also maintains PMP and ITIL certifications. She resides in Houston with her family.



### ANN LAI

ARM Business Leader, Personal System, HP Inc.

Ann Lai is the ARM business leader for personal systems at HP. This is a pivotal role as HP launches a new organization to lead the ARM Business – a critical program designed to strengthen long-term partnerships and drive future growth. Ann has worked at HP for over 25 years in various roles in supply chain and product management leadership, including leading notebook product management and innovations leadership. Under Ann's leadership in her most recent role as VP of displays solutions and NPI lead, HP's display solutions have evolved to meet the demands of hybrid work, blending cutting-edge technology with intuitive design. Ann holds a bachelor's degree in architecture from the University of California, Berkeley, and an MBA degree from the University of Southern California. Ann and her family reside in Houston, but she is a Northern California Bay Area native.



### LENG LIM

VP of HP Design Engineering, HP Inc.

Leng Lim is vice president of design engineering at HP. She graduated with a master's degree in mechanical engineering from Stanford and has worked her way from mechanical engineer to vice president. Her experience has ranged from networking design at Motorola and product design at Apple to early work in a Silicon Valley startup. Acute decision-making, in-depth technical acumen and passion for talent has made her one of the most influential technology leaders at HP. She has a passion for nurturing talent, akin to her love for tending to her garden. Traveling and exploring new experiences invigorate her mind, sparking fresh ideas and concepts. She is married with two children, ages 16 and 9.



### JERI CALLAWAY

Head of HP Strategic Alliances, HP Inc.

Jeri Callaway is the senior vice president and global head of HP strategic alliances. Her organization is responsible for the alliance strategy, driving operational initiatives and strategic engagements with each of the HP alliance partners. With more than 25 years of experience in the IT industry, Jeri has held numerous executive positions, serving commercial and consumer customers across multiple geographies. Jeri is passionate about technology innovation, building and developing teams, and encouraging women in STEM fields. She is active in the international leadership coaching community and is an executive sponsor for the HP Houston Women's Impact Network. Jeri holds a B.S. in electrical engineering from the University of Tennessee, an Executive MBA from Harvard University, and studies data science at Penn State University. She resides in Houston, Texas with her husband and has one son.



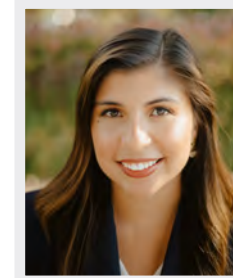
### JINYU MAO

Senior Director of Product Planning & AI Experiences, HP Inc.

Jinyu Mao is a global product and AI leader and senior director of product planning and AI experiences at HP Inc. With more than 10 years of experience across North America, Europe and Asia, she has led end-to-end product strategy, growth and user experience for large-scale technology platforms. At HP, Jinyu drives the AI PC strategy for a more than \$10B commercial notebook segment, shaping roadmaps that embed AI and machine learning into core experiences to improve productivity, automation and personalization. She partners closely with engineering, data science, UX and silicon ecosystem leaders including Intel, AMD, Qualcomm and Nvidia to optimize AI workloads and performance efficiency. Previously, she built and led HP's CX/UX Center of Excellence. Jinyu is trilingual (English, French and Mandarin) and has pursued executive education at MIT Sloan and Stanford Graduate School of Business.

## NEGOTIATE TO YES

Centered on real experiences, this conversation unpacks the moments when women had to advocate for themselves and others. Leaders share stories of negotiating pivotal career decisions and high-stakes conversations that shaped their confidence and sense of agency.



### DANIELA GEORGE

Global Strategy & Business Development Director, Partnerships & Alliances, Baker Hughes

Daniela George is a senior leader in energy technology and product strategy with more than a decade of experience driving growth at the intersection of engineering, innovation and commercialization. She currently serves as a strategy and business development director for partnerships and alliances at Baker Hughes, where she leads go-to-market strategy, portfolio positioning and partner enablement. Daniela leads cross-functional teams to define value propositions, drive portfolio growth and enable partners and customers to solve complex asset performance and reliability challenges across global operations. She has built a career spanning technical, commercial and leadership roles, bringing a systems-level perspective to how organizations scale innovation. Daniela is passionate about expanding opportunities for women in STEM and holds a degree in petroleum engineering from Texas A&M University and an MBA from Rice University.



### CARMALITA DEETON

Senior Innovation Leader, Amazon Web Services

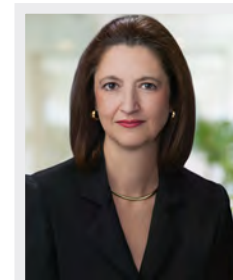
Carmalita Deeton is a trailblazing leader at the intersection of innovation, strategy and social impact, with more than a decade of success in the tech industry. Her contributions at AWS, a Fortune 5 company, equipped her with critical business savvy and expertise she now applies to her entrepreneurial ventures. Today, Carmalita is the founder of Innovate 33, a women's investment network. With a proven history of managing billion-dollar P&Ls, her business prowess encompasses strategic thinking, revenue expansion and establishing efficient operational frameworks from the ground up. Her work is defined by both sharp business acumen and a deep commitment to social equity. She also owns Our Pride Our Village, a nonprofit deeply committed to uplifting local communities. When she's not building futures, she finds joy in fitness, fashion and authentic community.



### ALEX FARIAS-SORRELS

Partner, Sorrels Law

Alex Farias-Sorrels is a native Houstonian and 15-year litigator who left big law to pursue her passion of helping people who have been wrongly injured. Alex co-founded Sorrels Law five years ago. Sorrels Law is now a 34-lawyer firm known throughout the state for its expertise in trial law and handling high-profile personal injury cases and business lawsuits. She has obtained record results for her clients. In October 2021, she and her husband obtained what was then the largest actual damages verdict in U.S. history for an injured worker, \$352.7 million, in a fully contested jury trial. She graduated in the top 10% of her class at the University of Miami School of Law and with honors at the University of Miami. She is a mother of two children.



### ROBIN RUSSELL

Deputy Managing Partner, Hunton

Robin Russell serves as deputy managing partner of Hunton Andrews Kurth. She is a fellow in the American College of Bankruptcy and is recognized by Chambers USA as an eminent practitioner in Texas bankruptcy. Her practice combines depth of experience across a broad spectrum of capital finance transactions, including restructurings, reorganizations, liquidations, asset-backed financings and distressed asset acquisitions for clients in numerous industries, including energy, financial services and real estate. She also provides strategic advice to corporate clients and special committees on structuring acquisitions and business relationships to minimize economic risks in the event of financial distress. Robin has been with the firm for 37 years and has served in numerous leadership positions. She received her law degree from Baylor Law School and her master's in banking law studies from Boston University School of Law.



### JUDITH HAYES

Chief Science Officer, NASA

Judith Hayes is a senior NASA executive with more than three decades of experience advancing astronaut health and performance. She serves as NASA chief science officer for the Human Health and Performance Directorate, where she leads science strategy, partnerships and policy. Judith has directed interdisciplinary teams for biomedical research and space medicine projects supporting Space Shuttle, NASA-Mir, International Space Station and Artemis initiatives. She led major efforts such as establishing the NASA Human Health and Performance Laboratory and expanding NASA research at the Gagarin Cosmonaut Training Center in Russia. She holds bachelor's and master's degrees from West Virginia University in exercise physiology, a master's in public health from the University of Texas School of Public Health and a Ph.D. in organizational leadership from Our Lady of the Lake University.



## CHENIERE PROVIDES THE ENERGY PEOPLE NEED

We're energizing a more secure future, which is why we are proud to support the annual Women in Leadership Conference and the business leaders of today and tomorrow.



NYSE: LNG



## power on AMERICA

### Powering Progress by Empowering Leaders

Constellation is more than an energy company — we're a trusted leader in building a clean energy future and an advocate for the communities we serve. Powering homes, businesses and industries with unmatched reliability through our fleet of nuclear, hydro, wind, solar and natural gas facilities, we're as committed to building a clean energy future as we are to strengthening the communities we serve. By investing in education, workforce development and emerging leaders, we are shaping the future of our communities and building pathways to opportunity.

That's why we're proud to sponsor the Rice Women in Leadership Conference and celebrate the leaders powering the Houston community.

[constellationenergy.com](http://constellationenergy.com)





# David Weekley Homes is Proud to Support the Women in Leadership Conference

Copyright © 2025-26 David Weekley Homes - All Rights Reserved. Houston, TX (HST-25-005545)



At Phillips 66, we Bring the Go in everything we do, every single day. Supporting our people, our environment and our communities is how we're living into our mission of providing energy and improving lives.

# That's why we're proud to support the RICE WOMEN IN LEADERSHIP CONFERENCE.



@Phillips66Co

26-0013\_5 © 2026 Phillips 66 Company. All Rights Reserved.



# Empowering women in industry.

Our people are the heart of our industry and the foundation of our achievements.

Leveraging on-the-job training and mentorship from senior leaders, we provide opportunities to learn and develop new skills to help kick-start careers for young women and men around the world.

Tenaris is proud to sponsor the Rice Business Women in Leadership Conference.



# Reshape the way the world works.

At HP, you're empowered to thrive both personally and professionally.

The HP Way drives our commitment to growth and inclusion which is supported by mentorship, ongoing learning and development, and business resource groups.

Here, your ideas matter, and with the support of a global team, you'll shape the future of work and realize your full potential.



**Working on Tomorrow's Energy Challenges Today**

It takes a diverse team working collaboratively around the globe to bring experience, creativity, and perspective to today's energy challenges.

Aramco Americas is proud to sponsor the 26<sup>th</sup> annual Rice University Women in Leadership Conference.

[americas.aramco.com](http://americas.aramco.com)

where energy is opportunity™



**Empowering Women Is What We Do.**

SheSpace is a workspace, meeting, and event space where bold women gather to find their community, amplify their ambition, and propel their dreams forward.

Our mission is to create clear pathways for women to achieve their professional and personal goals while benefiting from the convenience of a female-focused space.

We are committed to understanding the needs of women and believe that every woman deserves an inclusive and inspiring workspace—one that fosters meaningful connections, reduces isolation, and encourages a healthy separation between professional and personal life.



[www.shespacehtx.com](http://www.shespacehtx.com)



**PUTTING OUR VALUES INTO ACTION**

Unity comes from embracing every voice and every idea. At NRG, we prioritize this by creating a space where everyone can thrive.

We're proud to support the Rice Women in Leadership Conference and its mission to empower women in achieving their career goals.

Learn more at [nrg.com](http://nrg.com)



Obstetrics, Gynecology and Reproductive Sciences

**Personalized care for women at every stage and age of life**

- Obstetrics and Gynecology | Maternal-Fetal Medicine
- Fetal Diagnosis and Intervention | Placenta Accreta Spectrum
- Lactation Support | Midwifery | Urogynecology
- Advanced Minimally Invasive Gynecology
- Genetic Counseling | Certified Diabetes Education
- Comprehensive Menopause Care

For more information, call 832-325-7131 or visit [UTPhysicians.com/womens-health](http://UTPhysicians.com/womens-health).




CliffordChance

Creating advantage  
for your business  
drives everything  
we do



cliffordchance.com



We are a proud sponsor of the Women in Leadership Conference, where trailblazers, changemakers, and future leaders come together to drive progress. Empowerment starts here.

We help the world flow forward >



Vopak USA & Canada



vopak.com



Cosmetic Dentists of Houston is proud to support the **Women in Leadership Conference**.

**Transforming Smiles. Elevating Lives.**

At Cosmetic Dentists of Houston, our women-led practice is redefining the dental experience, blending advanced aesthetic dentistry with a wellness-driven approach that supports every part of your confidence. From the first conversation to the final reveal, we create an environment designed to help you feel seen, empowered, and ready to step into your full potential.



Learn more:  
[houstondental.com](http://houstondental.com)



human energy

**chevron is proud to support  
the women in leadership  
conference**

and celebrate the women who innovate, influence,  
and inspire others to make a difference in the  
business world and greater community



© 2020 Chevron. All rights reserved. IDC 3120-108620



AES DRILLING FLUIDS

DETAILS MATTER.  
**INNOVATION**  
DEFINES THEM.



FLUID. DRIVEN. EFFICIENCY.  
[WWW.AESFLUIDS.COM](http://WWW.AESFLUIDS.COM)



**Top Talent. Top School.**

HIRE A RICE MBA. VISIT [BUSINESS.RICE.EDU/HIRE](http://BUSINESS.RICE.EDU/HIRE).



# TOGETHER WE WILL BUILD BONDS THAT MATTER



## Your Next Chapter: The Rice MBA

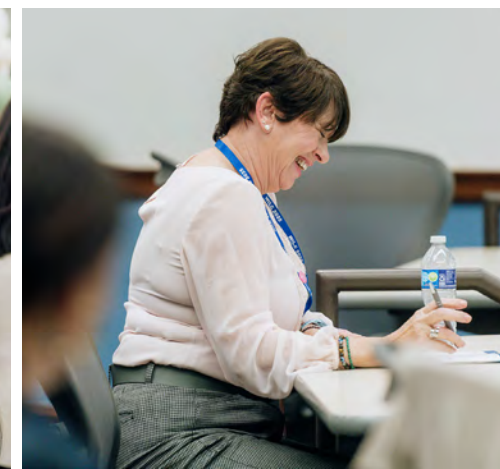
The right people change everything. With a Rice MBA, you'll gain a network that works as hard as you do. Here, relationships aren't just professional – they're personal, lasting and career-shaping. Your next big opportunity is just a conversation away.



[BUSINESS.RICE.EDU/WHY-RICE](https://business.rice.edu/why-rice)



## A LOOK BACK AT WILC 2025



# THANK YOU TO OUR SPONSORS!

CEO

---



PRESIDENT

---



PROVIDING ENERGY.  
IMPROVING LIVES.



VICE PRESIDENT

---



Clifford Chance



DIRECTOR

---



CONSULTANT

---

