



# RICE ENERGY CASE COMPETITION

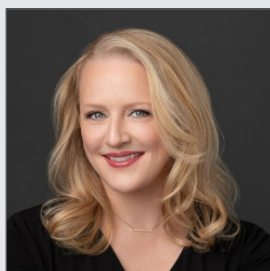
## NOVEMBER 13, 2025

McNair Hall, Rice University

### AGENDA

8:15 – 8:45 am	Registration and Breakfast	Rotunda & Anderson Family Commons
8:45 – 9:15 am	Judge and Student Orientation	Shell Auditorium & Anderson Family Commons
9:15 – 9:30 am	<b>Welcome &amp; Bill Arnold Memorial Keynote</b> Nancy Fischer, Senior Vice President of Commercial Operations, Constellation Energy	Shell Auditorium
9:30 – 10:00 am	Judge Introductions	Shell Auditorium
10:00 – 10:45 am	Team 1 – Watt the Flux	Shell Auditorium
10:45 – 11:00 am	Group Photo	Shell Auditorium
11:00 am – 12:15 pm	Lunch	Anderson Family Commons
12:15 – 1:00 pm	Team 2 – KnightOps	Shell Auditorium
1:00 – 1:45 pm	Team 3 – Clean Slate	Shell Auditorium
1:45 – 2:00 pm	Break	Shell Auditorium
2:00 – 2:45 pm	Team 4 – Watt's Next AI	Shell Auditorium
2:45 – 3:30 pm	Team 5 – Gridlock	Shell Auditorium
3:30 – 3:45 pm	Closing Remarks	Shell Auditorium
4:00 – 5:30 pm	RECC Reception and Networking	Anderson Family Commons

### BILL ARNOLD MEMORIAL KEYNOTE PRESENTATION



**NANCY FISCHER**

*Senior Vice President of  
Commercial Operations,  
Constellation Energy*

Nancy Fischer serves as the senior vice president of commercial operations at Constellation Energy, where she manages a team of over 400 employees across three key departments: commercial business solutions, retail operations, and wholesale operations. Since joining Constellation in 2014, Nancy has focused on enhancing operational processes and customer experiences in the commercial power and gas sectors. Nancy brings over 25 years of energy industry experience, including her previous role at CenterPoint Energy, where she spent 11 years working in finance and customer service, eventually leading the customer service performance management and strategy team. Her career also includes consulting roles at Accenture, working with notable companies like Dupont, Ameren Energy and Entergy.

Nancy holds a Bachelor of Business Administration in Marketing and a Bachelor of Arts in Economics from Southern Methodist University, as well as an MBA from Rice University.

# THANK YOU TO OUR SPONSORS!

## ANCHOR



## PRINCIPAL



## PARTNER



GIBSON DUNN



**Mauricio Parilli**  
Executive Chair

**Maria Luisa Cesar**  
Vice Chair  
Sponsorship Co-Chair

**Iknot Oseni**  
Sponsorship  
Co-Chair

**Dev Rathore**  
Case Prompt  
Author

**Varun Garg**  
Operations  
Chair

**Bikram Sidhu**  
Marketing  
Chair

**Nishant Verma**  
Treasurer

**BUSINESS.RICE.EDU/RECC**