

LEGACY OF LEADERSHIP: CELEBRATING 25 YEARS OF IMPACT



# WOMEN IN LEADERSHIP CONFERENCE 25 YEARS | 2025

FEBRUARY 28, 2025 • MCNAIR HALL, RICE UNIVERSITY



RICE | BUSINESS

# WOMEN IN LEADERSHIP CONFERENCE 2025 – AGENDA

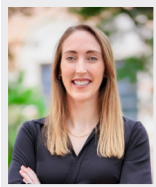
6:45 – 8:00 AM	<b>REGISTRATION AND BREAKFAST</b>	Anderson Family Commons
8:15 – 8:35 AM	<b>WELCOME AND OPENING REMARKS</b> <b>Anastasiya Zavyalova, Ph.D.</b> – Associate Dean for Degree Programs, Associate Professor of Strategic Management, Rice Business <b>Emily Brown</b> – 2025 Women in Leadership Conference President	Shell Auditorium
8:35 – 9:30 AM	<b>OPENING KEYNOTE SPEAKER</b> <b>Marie Myers</b> , Executive Vice President & Chief Financial Officer, HPE	Shell Auditorium
9:45 – 10:40 AM	<b>MORNING PANELS I</b> <b>Strategic Risk-Taking: Real Stories of Career-Defining Choices</b> <b>Ann LeSavage</b> – Director, IT Advisory, Impact Advisors   <b>Claire Harvey</b> – Partner, EIV Capital   <b>Zhanna Golodryga</b> – Executive Vice President, Emerging Energy & Sustainability, Phillips 66   <b>Meagan Murphy Crawford</b> – Founder and Managing Partner of SpaceFund and Host of the Mission Eve Podcast   Moderator: <b>Brian Jackson</b> – Senior Manager of Origination, Earthrise Energy <b>Texas Legal Landscape: What Business Leaders Should Know</b> <b>Shai Littlejohn</b> – Director and Corporate Counsel - Global Supply Chain, Innovation & Commercial, Starbucks Coffee Company   <b>Lauren Phillips</b> – Vice President Human Resources, Mears Group, Inc.   <b>Lisa Modica</b> – Vice President, Global Labor and Employment Law, Halliburton Company   <b>N. Lucy Chukwurah</b> – Senior Assistant City Attorney, City of Houston Legal Department   Moderator: <b>Imrana Manzanares</b> – Nurse Attorney, Abraham Watkins	Shell Auditorium  Anderson Family Commons
10:55 – 11:50 AM	<b>MORNING PANELS II</b> <b>Representation and Belonging in the Workplace</b> <b>Constance Porter, Ph.D.</b> – Senior Associate Dean for Belonging and Engagement & Associate Clinical Professor of Marketing, Rice Business   <b>Clintarisha (Re) Kenebrew</b> – Vice President, People & Culture, Bureau Veritas   <b>Tanu Grewal</b> – VP, Marketing, Innovation, Ecommerce, AIEn USA   <b>Sunny Ahmed</b> – Global Alliance Leader, Consulting Partner Center of Excellence, Amazon Web Services (AWS)   Moderator: <b>Pranika Uppal Sinha</b> – Managing Director, DEI and Organizational Development, Greystone <b>Navigating Challenges Facing Women in Leadership</b> <b>Kimberly Carpenter</b> – Vice President, Business Marketing & Customer Experience, NRG Energy   <b>Stephanie Palmer</b> – Corporate Communications Advisor, Aramco   <b>Jeri Callaway</b> – Senior Vice President and Global Head of HP Strategic Alliances, Personal Systems, HP Inc.   <b>Skylair DeRanieri</b> – Director, Maintenance Support, Cheniere   Moderator: <b>Keri Sprung</b> – Vice President of Education and Communications, Director, Center for Women's Heart & Vascular Health, The Texas Heart Institute <b>Women-Led Ventures: Charting New Paths</b> <b>Katie Fowler</b> – President, Unchained Value   <b>T. Canady Barton</b> – Founder + CEO, BLACKBOXX   <b>Grace Rodriguez</b> – CEO/Executive Director, Impact Hub Houston   <b>Monisha Shah, M.D.</b> – Medical Director & Founder, Atlas Longevity & Rejuve Medical Spa   Moderator: <b>Evy Pappas</b> – Design Director, Pappas Restaurants, Inc.	Classroom 212  Shell Auditorium  Anderson Family Commons
11:50 AM – 1:00 PM	<b>NETWORKING LUNCH</b>	Anderson Family Commons
1:00 – 1:45 PM	<b>AFTERNOON WORKSHOPS I</b> <b>Lead Your Way: Redefining Leadership for Today's World</b> <b>Patty Williams-Downs</b> – Founder & CEO, BreakingBounds Enterprises <b>Your Success Squad: Harnessing the Strength of Mentorship</b> <b>Rochelle Savel</b> – VP of Supply Chain Management, Aspen Aerogel   <b>Jennifer Soliman</b> – CHRO, Board Member, Private Investor <b>Elevating Executive Presence To Enhance Your Personal Brand</b> <b>Janet H. Moore</b> – Director of Communication Program, Senior Lecturer in Management, Rice Business <b>Corporate Boards: What To Know and How To Get There</b> <b>Lemar Marie Brown</b> – Advisory Board Member of InnoVent Renewables   <b>Michelle Lewis</b> – President, 1911 Advisory, LLC, Independent Director, Chair of Nominating, Governance and Compensation Committee, ADENTRA Group   <b>Janeen Judah</b> – Independent Director, Patterson-UTI Energy and Aethon Energy   <b>Kim Denney</b> – Managing Director and Partner, Newport LLC	Classroom 212  Classroom 312  Classroom 218  Shell Auditorium
2:00 – 2:45 PM	<b>AFTERNOON WORKSHOPS II</b> <b>Ethics and the Empowered Cyborg: Leading the Future with AI</b> <b>Summer Husband, Ph.D.</b> – SVP, Data Products & Applied Intelligence, Worley Digital   <b>Kathleen Perley</b> – Instructor in Mangagement & Deans Advisor on AI Initiatives, Rice Business <b>Bold Leadership: Strategies for Assertiveness</b> <b>Stephanie Tsuru</b> – Cofounder and CEO, SheSpace   <b>Kafi Slaughter</b> – Managing Director, Private Client Advisor, Bank of America Private Bank   <b>Abby Alford</b> – Vice President, CBRE   <b>Maria Moncada Alaoui</b> – Porsche Vice President, Sonic Automotive   <b>Marie Myers</b> – Executive Vice President & Chief Financial Officer, Hewlett Packard Enterprise <b>Negotiate to YES</b> <b>Richa Bansal</b> – Founder and Executive Career Coach, Pinkcareers <b>Leading the Way Towards Healthy Resilience</b> <b>Danielle D. King, Ph.D.</b> – Associate Professor of Psychology and Associate Dean of Graduate and Postdoctoral Studies, Rice University	Classroom 212  Shell Auditorium  Classroom 312  Classroom 218
3:00 – 3:45 PM	<b>CLOSING KEYNOTE SPEAKER</b> <b>Kathryne Reeves</b> – Senior Vice President, Strategy, Product Management, BD & Marketing, Cepheid	Shell Auditorium
3:45 – 4:00 PM	<b>CLOSING REMARKS   OWL AWARD</b>	Shell Auditorium
4:00 – 5:30 PM	<b>CLOSING RECEPTION AND NETWORKING</b>	Anderson Family Commons

On behalf of the 2025 Women in Leadership Conference Planning Committee, we are excited to welcome you to Rice Business for the 25th anniversary of the Women in Leadership Conference. This year's theme, **Legacy of Leadership: Celebrating 25 Years of Impact**, underscores the remarkable progress women have made in business and leadership, and the importance of building on that foundation to inspire and empower the next generation. Together, we honor the diverse voices, extraordinary achievements and shared experiences that have defined this community and propelled us forward.

The Women in Leadership Conference is more than an event – it has become a movement. Whether you are here to listen to inspiring speakers, gain practical strategies in our workshops, or connect with others, you are part of a vibrant community dedicated to fostering inclusivity and advancing women in leadership. It is with special thanks that we spotlight our generous sponsors who have supported our mission. Without them, this conference would not be possible. We also wish to extend our heartfelt gratitude to the staff, students and faculty of Rice Business, whose passion for this event each year remains unmatched and invaluable.

We hope today inspires you, challenges you and equips you to continue creating opportunities for yourself and others. As we celebrate the past 25 years of impact and progress, let us also commit to paving the way for those who will follow. Together, we can ensure the next 25 years of leadership are even more impactful than the last.

With gratitude for the past and commitment to the future,  
The 2025 Women in Leadership Conference Planning Committee



*Emily B*

EMILY BROWN  
President



*Anne Santos*

ANNE SANTOS  
External Relations Chair



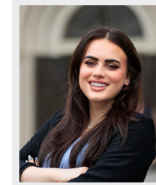
*S. Nash*

SARAH NASH  
External Relations Chair



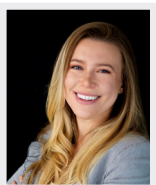
*Crystal Ho*

CRYSTAL HO  
Operations Chair



*Sarah Aldin*

SARAH ALDIN  
Operations Chair



*Kelsey Clark*

KELSEY CLARK  
Internal Relations Chair



*Jeffrey Yates*

JEFFREY YATES  
Allyship Chair



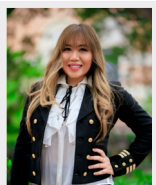
*Isamar Lopez-Veracruz*

ISAMAR  
LOPEZ-VERACRUZ  
Operations Committee



*Amanda Vaughn*

AMANDA VAUGHN  
Operations Committee



*Illandere Cho*

ILLANDERE CHO  
Operations Committee



*Amy Lao*

AMY LAO  
Operations Committee



*Leigh Noblin*

LEIGH NOBLIN  
Internal Relations  
Committee



*Jen Lu*

JEN LU  
Internal Relations  
Committee



*Sierra F.*

SIERRA FREDENRICH  
Internal Relations  
Committee



*Brittany*

BRITTANY  
URESTI-FERNANDEZ  
Internal Relations  
Committee



*Christina Griffin*

CHRISTINA GRIFFIN  
External Relations  
Committee



*Moriah Shaw*

MORIAH SHAW  
External Relations  
Committee



*Alaina Schusler*

ALAINA SCHUSLER  
External Relations  
Committee



*Nana Baker*

NANA BAKER  
External Relations  
Committee



*R. Caroline Metts*

CAROLINE METTS  
External Relations  
Committee



*Jasmine Liu*

JASMINE LIU  
External Relations  
Committee

# KEYNOTE SPEAKERS



## MARIE MYERS – Opening Keynote Speaker

### **Executive Vice President & Chief Financial Officer, Hewlett Packard Enterprise**

Marie Myers is the executive vice president and chief financial officer at Hewlett Packard Enterprise. She is a strategic and visionary CFO known for making financial decisions that fuel innovation and performance. Prior to this role, she held various roles at HP Inc., including CFO, chief transformation officer, global controller and Americas CFO of the Personal Systems business unit.

Myers has been named to many lists of influential people, including Top 20 Most Powerful Businesswomen in Texas, Top 40 Under 40 in Finance, Top 30 Influential Women of Houston and more. She serves on the board of directors for Qualcomm Incorporated and the advisory boards at the University of St. Thomas in Houston and the University of Queensland in America, Inc.

Myers earned a Bachelor of Arts in political science and a Bachelor of Economics from the University of Queensland in Brisbane, Australia, and an MBA from the University of St. Thomas in Houston.



## KATHRYNE REEVES – Closing Keynote Speaker

### **Senior Vice President, Strategy, Global Product Management and Marketing, Cepheid**

Kathryne Reeves has over 25 years of experience in marketing and general management. As the senior vice president of strategy, global product management and marketing at Cepheid, she lends her extensive leadership experience and biotech acumen to execute strategy, drive the success of on-market solutions and prepare best-in-class launch practices for products.

Prior to joining Cepheid, Reeves served as senior vice president and chief marketing officer at Illumina, and as senior vice president of enterprise marketing and general manager of the Medical Services Global Business Unit at Cardinal Health. Earlier roles include positions at Booz Allen Hamilton, Nationwide Insurance, Scotts Miracle-Gro and more.

Reeves holds a bachelor's degree in civil engineering from Stanford University and an MBA from Harvard Business School. She is on the Board of Trustees for St. Jude's Children's Research Hospital and the International Women's Forum, and was named one of the top influential women in corporate america by the Savoy Network in 2016.



## ANASTASIYA ZAVYALOVA, PH.D. – Opening Remarks

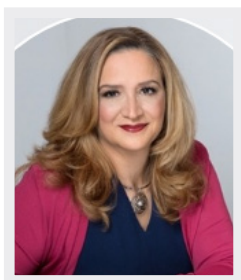
### **Associate Dean for Degree Programs, Associate Professor of Strategic Management, Rice Business**

Anastasiya Zavyalova is the associate dean for degree programs and associate professor of strategic management at Rice Business. She is also an international research fellow at the Oxford University Centre for Corporate Reputation and an associate editor at the Academy of Management Review. Zavyalova's research focuses on socially responsible and irresponsible organizational actions that build, damage and restore organizational social evaluations, such as reputation, celebrity and stigma.

Zavyalova has taught courses on reputation management, ESG issues in strategy, organization theory, strategic management and social entrepreneurship. She completed her doctorate in strategic management at University of Maryland's Robert H. Smith School of Business.

# STRATEGIC RISK-TAKING: REAL STORIES OF CAREER-DEFINING CHOICES

Hear dynamic women leaders share real stories of bold risks that shaped their careers. This session focuses on empowering women to embrace strategic risks as a vital tool for unlocking opportunities.



**ANN LeSAVAGE**

**Director, IT Advisory, Impact Advisors**

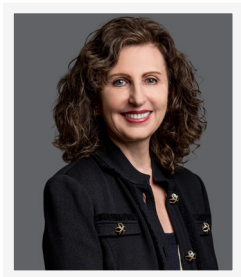
Ann LeSavage is a director in the IT advisory practice at Impact Advisors, a leading healthcare advisory services firm. She focuses on assisting clients with IT strategy and planning, mergers and acquisition, technical integrations and technology transformations. Prior to joining Impact Advisors, LeSavage was founder and principal of AML Services and Solutions, LLC. She has over 25 years of healthcare technology experience in IT operations, information security and privacy, vendor and outsourcing selection, and interim management services. She has held a variety of leadership positions in provider organizations, such as Texas Children's Hospital. LeSavage received an undergraduate degree from the University of St. Thomas and an MBA from Rice Business. She currently serves on the board for the Executive Leadership for Women program at Rice Business.



**CLAIRE HARVEY**

**Partner, EIV Capital**

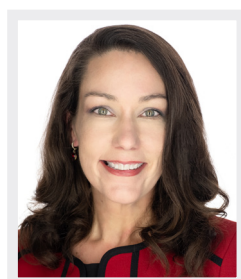
Claire Harvey is the partner and CEO of EIV Resources and a member of EIV Capital's investment committee. Prior to joining EIV, Harvey spent 21 years investing and advising in the energy industry, primarily in the upstream sector. Most recently, she served as founder and president at ARM Resource Partners, LLC., and as founder at Gryphon Oil and Gas, LLC., a Blackstone-sponsored company focused on acquiring non-operated interests in the Permian Basin. Prior to that, she worked with Pine Brook Partners, TPH Partners and Lehman Brothers and Barclays. Harvey currently serves as a director of Sitio Royalties Corp. (NYSE: STR). She earned her MBA from Rice Business and a BBA in finance from Texas A&M University, where she was co-captain of the varsity volleyball team.



**ZHANNA GOLODRYGA**

**Executive Vice President, Emerging Energy & Sustainability, Phillips 66**

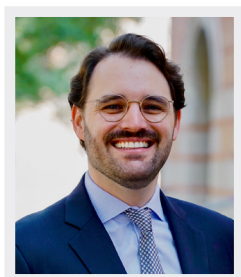
Zhanna Golodryga is the executive vice president of emerging energy and sustainability for Phillips 66. She has over 30 years of experience within the oil and gas industry, and served as senior vice president and chief digital and administrative officer for Phillips 66 prior to her current role. Before joining Phillips 66, Golodryga served as chief information officer and senior vice president of services, with responsibilities for global supply chain, facilities and office services for Hess Corporation. Before that, she was vice president and chief information officer at BHP Billiton, vice president of information technology at TeleCheck International, manager of information systems at Baker Hughes and IT services manager at Marathon Oil. Golodryga received her master's degree in mechanical engineering from Kiev Engineering and Construction Institute in Ukraine.



**MEAGAN MURPHY CRAWFORD**

**Founder and Managing Partner of SpaceFund and Host of the Mission Eve Podcast**

Meagan Murphy Crawford is an entrepreneur, business educator, space industry pioneer and investor. She co-founded NewSpace Business Plan Competition, the longest-running space business plan competition, and is a co-founder and managing partner of SpaceFund, a venture capital firm investing in space startups. She is a leading voice in the entrepreneurial space industry and has had many successful startup experiences in the field. As a dedicated advocate for women in space, Crawford hosts the podcast "Mission Eve," which is frequently featured by media and academia as a thought leader on the industry's development and investment potential. She also sits on the board of directors of over a dozen space organizations.



**BRIAN JACKSON – Moderator**

**Senior Manager of Origination, Earthrise Energy**

Brian Jackson is the senior manager of origination at Earthrise Energy, where he leads renewable energy power purchase agreement origination. Having transitioned from oil and gas, his career now spans commercial structuring, market strategy and M&A in renewables. Jackson serves on the Rice Business Alumni Association Board and co-hosts the school's podcast "Owl Have You Know." He is also committed to mentoring young professionals and advocating for LGBTQ+ representation in business. Jackson holds a bachelor's degree in political science from Texas A&M University, a J.D. from South Texas College of Law Houston and an MBA from Rice Business. He enjoys exploring Houston with his dog, Jet, and his partner, Trace, and can often be found biking, golfing or spending time on the water.

# TEXAS LEGAL LANDSCAPE: WHAT BUSINESS LEADERS SHOULD KNOW

Discover how the evolving legal landscape in Texas impacts women in business. Panelists will discuss key legislative changes in DEI initiatives, pay equity, workplace protections, healthcare, and maternity leave, offering strategies for navigating today's environment and advocating for equity and inclusion.



SHAI LITTLEJOHN

**Director and Corporate Counsel – Global Supply Chain, Innovation & Commercial, Starbucks Coffee Company**

Shai Littlejohn is the director of corporate counsel for global supply chain innovation and commercial operations at Starbucks. As the lead legal counsel to Starbucks engineers, she advises on cutting-edge innovations in retail store equipment and capital projects for company-owned coffee roasting plants and distribution centers. She also provides guidance to a variety of executive committees and advises on global investigations and stakeholder communications. Prior to this role, Littlejohn was the associate general counsel for Delek US Holdings, consulted for multiple Fortune 500 companies, and served at both the Federal Trade Commission and the Office of the United States Attorney. She is an officer on the board of directors for Music Will, Inc. and advocates for creative arts in the pursuit of personal fulfillment and success.



LAUREN PHILLIPS

**Vice President Human Resources, Mears Group, Inc.**

Lauren Phillips is the vice president of human resources at Mears Holdings, LLC, where she leads a team focused on attracting, developing and retaining the best team in the utility construction industry. She began her career at Cooper Industries over 15 years ago and has since held roles at DIRECTV and AT&T. Phillips has broad experience in human resources, including talent development, talent management, labor and employee relations, compensation, compliance and HR systems. She is most passionate about creating talent development programs to assist organizations and individuals in reaching their business and career goals. Phillips is a proud alumna of the University of Illinois at Urbana-Champaign, where she received both a bachelor's degree in business administration and a master's degree in human resources and industrial relations.



LISA MODICA

**Vice President, Global Labor and Employment Law, Halliburton Company**

Lisa Modica is the vice president of global labor and employment law at Halliburton Company. In this role, she is responsible for the legal strategy and risk management of global employment claims and disputes, regulatory enforcement actions and employment litigation. She is a member of the executive legal management team and a trusted advisor to the C-Suite. Prior to joining Halliburton, Modica served as an ERISA attorney at Continental Airlines and ERISA associate at Vinson & Elkins L.L.P. Modica is the recipient of several awards, including the 2024 Top 30 Influential Women of Houston and the 2018 Breakthrough Woman Award by the Greater Houston Women's Chamber of Commerce. Committed to community service, Modica serves on the board for the Halliburton Charitable Foundation and the Houston Area Women's Center.



N. LUCY CHUKWURAH

**Senior Assistant City Attorney, City of Houston Legal Department**

Attorney N. Lucy Chukwurah is a senior assistant city attorney in the City of Houston Legal Department, where she works in labor, employment and civil service (LECS). In this role, Chukwurah advises client-departments on a broad spectrum of employment and labor relations matters. She provides advice and resources to multiple departments and represents the City of Houston and city employees in federal and state litigation. Chukwurah has been in practice for over 20 years, during which she has worked for corporate legal departments, small boutique firms and served as principal at NLC Law Group. Chukwurah received her JD, cum laude, from Thurgood Marshall School of Law and her bachelor's degree in psychology from the University of Oklahoma, where she became a member of Delta Sigma Theta Sorority, Inc.



IMRANA MANZANARES – Moderator

**Nurse Attorney, Abraham Watkins**

Imrana Manzanares serves as the nurse attorney at Abraham Watkins. As both a nurse and a lawyer, she litigates a wide range of personal injury matters, including home explosions, premises cases, automobile accidents, catastrophic injury cases and 18-wheeler accidents. Manzanares earned her Bachelor of Nursing from the University of Texas Medical Branch (UTMB) in 2002. Her passion for care led her to work in the Texas Medical Center's intensive care units. Manzanares began attending law school at the Thurgood Marshall School of Law after finding she could combine her nursing training with her legal training to assist clients and those injured as a result of negligence of another.

Gain expert strategies for fostering representation and belonging in today's workplace. Panelists will reflect on progress in creating inclusive workplaces, address misconceptions about DEI programming and highlight the critical role these initiatives play in building stronger, more equitable organizations.



CONSTANCE PORTER, PH.D.

**Senior Associate Dean for Belonging and Engagement & Associate Clinical Professor of Marketing, Rice Business**

Constance Porter is the senior associate dean for belonging and engagement and associate clinical professor of marketing at Rice Business. She has served as senior associate dean since 2021, teaches various marketing courses and has published in premier academic journals over the years. Prior to joining Rice, she taught at University of Notre Dame's Mendoza College of Business. Porter earned a bachelor's degree in economics from the Wharton School at the University of Pennsylvania, an MBA from University of Michigan and a Ph.D. from Georgia State University. Prior to pursuing a career in academia, she spent several years as a management consultant and commercial banker.



CLINTARISHA (RE) KENEBREW

**Vice President, People & Culture, Bureau Veritas**

Clintarisha (Re) Kenebrew is the vice president of people and culture at Bureau Veritas, where she supports over 6,000 employees and a global revenue market stream. With 26 years of experience, she oversees human resources, including the engagement and career development of a diverse employee portfolio. Kenebrew is also involved with Dress for Success Houston, SUPERGirls SHINE Foundation, National Society of Black Engineers and Delta Sigma Theta Sorority, Inc. In 2020, she was featured in the Black History USA calendar as a rising star in the community and industry. Kenebrew received a bachelor's degree in chemical engineering from the University of Texas at Austin and a master's degree in oil and gas management from Heriot Watt University. She enjoys spending time with family and friends, traveling and reading.



TANU GREWAL

**Vice President of Marketing, Innovation, Ecommerce, AIEn USA**

Tanu Grewal is a global marketing executive and board leader with a track record of driving brand transformation, market expansion and revenue growth. Named a Top 100 chief marketing officer, she has successfully launched and revitalized billion-dollar brands across Fortune 100 companies as well as challenger brands at a high-growth startup. Grewal's expertise spans omnichannel marketing, sustainability-driven brand strategy and digital innovation, having led 5x revenue growth and built a multimillion-dollar e-commerce division. Grewal also serves on multiple boards, providing strategic guidance on brand innovation, consumer engagement and digital transformation. She is a sought-after speaker on marketing, women's leadership and business strategy, advocating for diverse leadership and corporate responsibility. A graduate of Rice Business, she mentors future leaders while shaping the future of brand growth.



SUNNY AHMED

**Global Alliance Leader, Consulting Partner Center of Excellence, Amazon Web Services (AWS)**

Sunny Ahmed is a distinguished global alliance leader for the Consulting Partner Center of Excellence at Amazon Web Services (AWS), bringing over 20 years of enterprise technology and consulting expertise. In his current role, he manages a multi-billion-dollar, global-scale cloud and AI consulting partnership business at Amazon. Ahmed is deeply committed to inclusion, diversity and equity, and serves as an Amazon Corporate Mentor, global vice president of allyship and mentorship for the Women at AWS Partner Board, and founder of the Amazon Sponsorship Project for Women. He attended the University of Texas at Austin for his undergraduate and postgraduate education and received an MBA from Rice Business. Ahmed lives in Austin, Texas, and enjoys hiking, writing, reading, live music and sports.



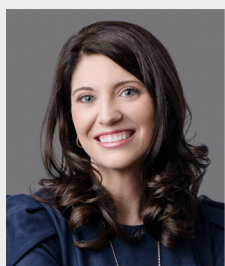
PRANIKA UPPAL SINHA – Moderator

**Managing Director, DEI and Organizational Development, Greystone**

Praniika Uppal Sinha leads diversity, equity, and inclusion (DEI) and organizational development at Greystone. She is responsible for DEI strategy and initiatives, including education, resources, employee resource groups and programming. She ensures Greystone's nationally recognized DEI efforts remain sustainable and oversees performance management, training, and several leadership programs. Prior to joining Greystone, Sinha worked at Oxy, Memorial Hermann Healthcare System and 21st Century Consulting. She is a graduate of Leadership Houston and volunteers with the Texas Diversity Council, Diversity Summit in Houston, and the Boys and Girls Clubs. Sinha earned a bachelor's degree in environmental engineering at Northwestern University and an MBA at Rice Business, where she serves as a lecturer. She resides in Houston with her husband, two daughters and rescue dog.

# NAVIGATING CHALLENGES FACING WOMEN IN LEADERSHIP

Explore the unique challenges women face in leadership, including maintaining work-life balance, challenging traditional leadership norms and tackling bias. Panelists will share strategies that have driven progress, inspiring and equipping future leaders to overcome obstacles and advance equity in leadership.



**SKYLAIR DERANIERI**

**Director, Maintenance Support, Cheniere**

Skylair DeRanieri is the director of maintenance support at Cheniere Energy, where she is responsible for the strategic direction of maintenance-related activities across the Sabine Pass and Corpus Christi liquefaction facilities. She oversees and enhances maintenance practices by driving operational excellence and managing a team of experts in the field. DeRanieri has been with Cheniere for 12 years and has over 20 years of experience in maintenance planning, scheduling and turnaround execution in the oil and gas industry. Prior to joining Cheniere, she worked at BP's Texas City Refinery and across multiple locations in their pipeline division. DeRanieri received a Bachelor of Applied Technology in industrial business management from Brazosport College and is currently enrolled in the MBA in leadership program at Lamar University.



**JERI CALLAWAY**

**Senior Vice President and Global Head of HP Strategic Alliances | Personal Systems, HP Inc.**

Jeri Callaway is the senior vice president and global head of HP strategic alliances within the personal systems business. Her organization is responsible for alliance strategy, driving operational initiatives and strategic engagements with each of the HP alliance partners. With over 25 years of experience in the IT industry, Callaway has held numerous executive positions serving commercial and consumer customers across regions. After she began her career at IBM in the laser printer business, she joined HP in 1991 to develop the commercial PC business. The company achieved significant growth and built a strong reputation under her leadership. Callaway holds a bachelor's degree in electrical engineering from the University of Tennessee, an executive MBA from Harvard University and studied data science at Penn State University.



**STEPHANIE PALMER**

**Corporate Communications Advisor, Aramco**

Stephanie Palmer leads strategic initiatives in corporate communications for Aramco Americas and is responsible for promoting corporate social responsibility programs, industry events and employee engagement activities. She also manages media relations and crisis communications for the Aramco Houston Half Marathon. Prior to this role, Palmer managed internal communications for Harris Health System at the start of the COVID-19 pandemic. She also served as the marketing manager for Big Brothers Big Sisters, a public speaker for the United Way campaign, and a producer for ABC 13 Eyewitness News and KPRC Local 2. Palmer's work has been recognized with top awards from the Internal Association of Business Communicators, the Business Marketing Association and the Texas Associated Press Broadcasters. She received a bachelor's degree in journalism from Texas A&M University.



**KIMBERLY CARPENTER**

**Vice President, Business Marketing & Customer Experience, NRG Energy**

Kimberly Carpenter brings a wealth of marketing experience to her role as vice president of business marketing & customer experience at NRG. Her background includes 15 years in the energy industry, as well as roles in the financial and home-building sectors. Carpenter's unique perspective includes stints as an award-winning business writer and highly valued team leader at NRG. In her current role, she has been a driving force behind the company's emergence as a customer-driven organization through their development of a revitalized customer experience platform. Her education mirrors her career diversity, with a bachelor's degree in journalism from the University of North Texas, an MBA from Texas A&M University-Commerce and a CX Management certificate from Rutgers University. Carpenter's interests are also varied and range from skydiving to pickle making.



**KERI SPRUNG – Moderator**

**Vice President of Education and Communications, Director, Center for Women's Heart & Vascular Health, The Texas Heart Institute**

Keri Sprung is the vice president for education and communications and director of the Women's Center at The Texas Heart Institute (THI). Sprung brings over 25 years of experience to her roles, offering guidance to strategic partnerships, coordinating communications, directing operations teams and more. Since joining The Texas Heart Institute in 2011, Sprung has developed community and industry relationships, as well as new partnerships and programs. Prior to her position at THI, Sprung served as vice president of marketing for an Austin-based biotech firm, co-founded two medical device companies and worked for Pfizer Pharmaceuticals. She received her bachelor's degree in biology from the University of Texas at Austin and an executive MBA from Rice Business, where she currently serves on the Rice Business Alumni Association Board.

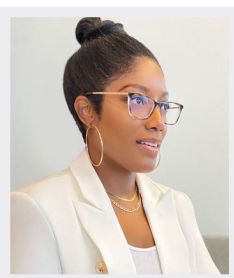
Dive into how women entrepreneurs are charting new paths. Panelists will share stories of innovation, resilience and boldness, offering fresh insights on overcoming barriers and creating opportunities to shape the future of women-owned businesses.



**KATIE FOWLER**

**President, Unchained Value**

Katie Fowler specializes in leading complex transformations with a focus on cultural change management. Now president and founder of Houston-based Unchained Value, Fowler's career has led her across the United States, the Middle East and Northern Europe through her work with SLB and Signify. While obtaining her Master of Engineering in supply chain management from the Massachusetts Institute of Technology (MIT), she gained experience working at Dell Computers, GE and Fortive. With over 15 years of experience in logistics, transformation, international operations and supply chain, Fowler brings a deep understanding of what it takes to make businesses successful and agile. Former leadership roles include vice president of supply chain, head of sales and operations planning, and supply operations deployment manager.



**T. CANADY BARTON**

**Founder + CEO, BLACKBOX**

As the chief executive officer of BLACKBOX, T. Canady Barton is focused on connecting audiences through one-of-a-kind gifting experiences that amplify brands and stories. A serial entrepreneur and successful intrapreneur, Barton is well-respected as a diplomatic disruptor, force multiplier and storyteller, and is passionate about building high-performing, customer-centric teams. Prior to her current role, she served as a customer experience and innovation leader at Google Cloud Consulting and head of strategy and operations at YouTube marketing. Barton received an MBA from Rice Business, where she serves as a dedicated community member, and her bachelor's degree in chemical engineering from Texas A&M University. She is a devoted wife to her husband and best friend, Ernest, and a doting mother to her two daughters.



**GRACE RODRIGUEZ**

**CEO/Executive Director, Impact Hub Houston**

Grace Rodriguez is the co-founder, CEO and executive director of Impact Hub Houston, where she and her team design impact acceleration programs with global brands, build equitable entrepreneurial ecosystems with partners, and empower entrepreneurs with resources to tackle Greater Houston's most pressing challenges. Previously, she worked with the Houston City Council, TED and Mercury Fund, and she co-founded C2 Creative and Station Houston, proving her dedicated advocacy for innovation, collaboration and community resilience. During Hurricane Harvey relief efforts, she played a vital role in connecting local tech talent with stakeholders to develop solutions for rescue, recovery and rebuilding. Rodriguez has been recognized in the Houston Chronicle and awarded as an Outstanding Leader by Houston Business Journal, InnovationMap, the Philippine American Chamber of Commerce and Harris County Precinct 2.



**MONISHA SHAH, M.D.**

**Medical Director & Founder, Atlas Longevity & Rejuve Medical Spa**

Dr. Monisha Shah has been a physician for over 20 years, with a unique journey spanning various fields in medicine. She began her medical training at Chicago Medical School, completed her pediatrics residency at NewYork-Presbyterian/Weill Cornell Medical Center in New York City, and pursued a fellowship in pediatric emergency medicine at Texas Children's Hospital with Baylor College of Medicine. She then completed a fellowship in emergency ultrasound at UT Memorial Hermann in the Houston Medical Center. After several years in academic medicine, she transitioned to aesthetics and wellness and now focuses on longevity and functional medicine.



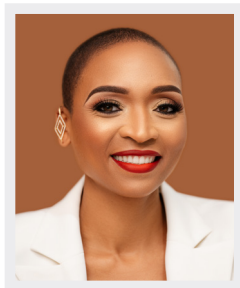
**EVY PAPPAS – Moderator**

**Design Director, Pappas Restaurants, Inc.**

Evy Pappas is chief design officer at Pappas Restaurants and contributes over a decade of experience to new construction, facility upgrades and strategic development. Pappas oversees an internal team of architectural, interior, kitchen and lighting designers that are responsible for over 85 existing locations and ongoing expansion. Before joining Pappas Restaurants, Pappas worked as an architect at Gensler and at Hashim Sarkis Architecture, Landscape, and Urban Design. She earned a bachelor's degree in visual arts and art history from Duke University and a Master of Architecture from Harvard University. Pappas also holds an MBA from Rice Business and is a past board member of the Rice Business Alumni Association Board of Directors. She is a registered architect and balances her career with being a dedicated mother of four.

### LEAD YOUR WAY: REDEFINING LEADERSHIP FOR TODAY'S WORLD

Learn how to navigate transitions as opportunities for growth in this workshop. Discover strategies to approach change with intention, harness pivotal moments to renew purpose, enhance impact, and lead boldly in an ever-evolving landscape.



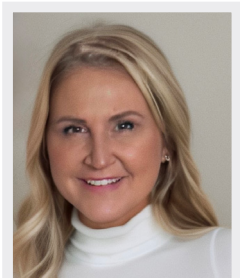
**PATTY WILLIAMS-DOWNS**

**Founder & CEO, BreakingBounds Enterprises**

Patty Williams-Downs is the founder and CEO of BreakingBounds Enterprises, where she oversees BreakingBounds Executive Coaching and Consulting and BreakingBounds Media. In this role, she develops strategies that empower leaders and organizations to break boundaries and achieve transformative growth. Williams-Downs began her journey as a Teach For America corps member, later holding leadership positions at OneGoal Houston, YES Prep Public Schools and KIPP Houston. She serves in numerous community leadership roles and was named to Houston Business Journal's lists of People on the Move and 40 Under 40. She holds a master's degree in educational leadership from George Washington University and a bachelor's degree in urban studies from Fordham University. She is a graduate of the Rice Business Coach Rice program and is a certified emotional intelligence (EQi) assessor.

### YOUR SUCCESS SQUAD: HARNESSING THE STRENGTH OF MENTORSHIP

Step into a transformative session where mentorship meets empowerment. This workshop will reveal how to leverage mentorship to supercharge your personal and professional life. Hear from two Rice Business alumni who will share the difference between a mentor and a sponsor and why both are important to elevate your career and build advocacy.



**ROCHELLE SAVEL**

**VP of Supply Chain Management, Aspen Aerogel**

Rochelle Savel is the vice president of supply chain management at Aspen Aerogel, where she optimizes cash flow, costs and scalability while focusing on global trade compliance and AI-driven risk mitigation. Prior to this role, Savel spearheaded manufacturing, supply chain management and product line management for Corning across Asia, Korea, Europe and Mexico. She joined Corning after 15 years at BP, where she drove transformational projects, like standardizing complex subsea designs and unifying global leaders to enterprise-wide programs. Savel holds a bachelor's degree in supply chain management from Michigan State University and an MBA from Rice Business. She continues her studies at the Massachusetts Institute of Technology (MIT), where she is focusing on leading AI strategy and execution.



**JENNIFER SOLIMAN**

**CHRO, Board Member, Private Investor**

Jennifer Soliman is a chief human resources officer (CHRO), board member and private investor. She formerly served as executive vice president and CHRO of Diamondback Energy, where she led teams across diverse administration areas and served as an advisor to the board. Prior to this role, Soliman was the senior vice president and CHRO at Sunnova Energy International. During her 20-plus year career, she worked in a variety of executive and specialist roles at firms including BP and Koch Industries. She served in the U.S. Air Force Reserves and holds a bachelor's degree from Rollins College and an MBA from Rice Business. Soliman's passion for volunteering has led her to work on boards at Rice University, the YMCA and the Hispanic Chamber of Commerce.

### ELEVATING EXECUTIVE PRESENCE TO ENHANCE YOUR PERSONAL BRAND

Understand the link between your personal brand and executive presence. Learn the art of cultivating, refining and showcasing both for increased professional success.



**JANET H. MOORE**

**Director of Communication Program, Senior Lecturer in Management, Rice Business**

Janet H. Moore has over 25 years of global professional experience across North and South America, Africa, Asia, Europe and the Middle East. As the director of the communication program and senior lecturer in management at Rice Business, she enjoys researching the intersection of authenticity, leadership communication and personal style. Moore's teaching specialties include executive presence, personal branding and leadership communication. As a professionally trained and certified executive coach, she has worked with professionals at companies like Accenture, ConocoPhillips, Goldman Sachs and KPMG. She also spent the first 15 years of her career practicing international business law. Moore attended the London School of Economics and graduated with honors from both Georgetown University's School of Foreign Service and the University of Texas School of Law.

## CORPORATE BOARDS: WHAT TO KNOW AND HOW TO GET THERE

Gain key insights into the world of corporate boards from experienced leaders. This panel will explore pathways to board service, discuss essential skills and qualifications, and share strategies to help you prepare to be in the room where it happens.



**JANEEN JUDAH**

**Independent Director, Patterson-UTI Energy and Aethon Energy**

Janeen S. Judah is a director of Patterson-UTI Energy and Aethon Energy. She has over 40 years of experience in the oil and gas industry and retired from Chevron in 2018. She currently serves on the advisory boards of University Lands and the College of Engineering at Texas A&M University, and she is the board president of both the Phi Mu Foundation and SPE Foundation. She is also an active member of the Houston chapters of the National Association of Corporate Directors, Women Corporate Directors and Private Directors Association. Judah holds both a bachelor's degree and master's degree in petroleum engineering from Texas A&M University, an MBA from the University of Texas of the Permian Basin, and a J.D. from the University of Houston.



**MICHELLE LEWIS**

**President, 1911 Advisory, LLC, Independent Director, Chair of Nominating, Governance and Compensation Committee, ADENTRA Group**

Michelle Lewis is an experienced public and private company director, C-suite officer, president and founder who has overseen numerous strategic transitions in the energy and industrial sectors. She has grown companies across 30 countries, including \$10B in acquisitions. In addition to her role at her own firm, 1911 Advisory, Lewis serves on the boards at Adentra (TSX: ADEN) and the John Brumley Texas Venture Labs at McCombs School of Business. She also works with venture capital-backed software company e2log and is the co-chair of Women Corporate Directors' (WCD) Houston Chapter, an organization for women who serve on publicly traded company boards or significant private and family-run businesses. Lewis is a traveler, an athlete, a Rice MBA graduate (class of 2005) and a proud mom of two.



**LEMAR MARIE BROWN**

**Advisory Board Member of InnoVent Renewables**

Lemar Marie Brown is a corporate board director with strong leadership experience, proven profit and loss results, and strengths in M&A, finance, international strategy, ESG and risk management. After she was elected to the board of private Canadian green energy supplier Certarus, the company grew rapidly and was successfully sold to Superior Plus (TSX: SPB) for \$1.05 billion Canadian, which represents an IRR of approximately 20% for shareholders. Currently, Lemar is an advisory board member of a private renewable company. Lemar retired after working with Shell plc and Goldman Sachs for over 25 years. More recently, she taught the capstone project course to executive MBA students as an executive professor at Texas A&M University's Mays Business School, where she continues to enjoy guest lecturing.



**KIM DENNEY – Moderator**

**Managing Director and Partner, Newport LLC**

Kim Denney is a top executive whose global perspective, engineering acumen and financial expertise have left an indelible mark across the petrochemical, energy and manufacturing sectors. In her leadership roles, she has accelerated organic growth, orchestrated successful acquisitions and achieved substantial cost savings through strategic initiatives. Having served over 24 years as a director, Denney has a deep understanding of board governance and an appreciation for organizational growth through servant leadership. She has applied her public company C-Suite experience as an advocate for both private enterprises and non-profit organizations, particularly during challenging transitions. Denney currently provides guidance to middle-market entrepreneurs and family businesses as a Newport LLC managing director. She holds a bachelor's degree in chemical engineering and an executive MBA from Rice Business.

### ETHICS AND THE EMPOWERED CYBORG: LEADING THE FUTURE WITH AI

Empower yourself to ethically deploy AI in your career. This session breaks down how AI works in simple terms and explores the ethical and legal considerations for using AI at work. Leave with practical tips and easy-to-use resources to start applying AI today.



SUMMER HUSBAND, PH.D.

**SVP, Data Products & Applied Intelligence, Worley Digital**

As the senior vice president of data products and applied intelligence at Worley, Summer Husband is driving data products and applied intelligence to enhance decision-making and boost profitability. She has 20 years of experience in the data field and leads Worley's data governance, data platforms, analytics and AI practices. She also chairs Worley's Responsible AI Council. After earning her Ph.D. in computational and applied mathematics at Rice University, Husband began a career in scientific consulting within the defense industry. She has since held roles in human resources and staffing in data science, data leadership and corporate data strategy, revolutionizing how organizations derive value from their data and implement innovative solutions. Outside of work, Husband enjoys spending time with family, hiking and cheering on her boys.



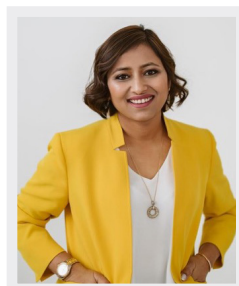
KATHLEEN PERLEY

**Instructor in Management, Deans Advisor on AI Initiatives, Rice Business**

Kathleen Perley is the CEO and founder of DemystifAI, a leader in integrating artificial intelligence with business strategy to drive growth. She is also an instructor on AI and the AI advisor to the deans at Rice Business, helping the school navigate adoption of AI while blending cutting-edge AI theory with real-world business applications. Before founding DemystifAI, Perley was the founder and CEO of DECODE, a healthcare-focused digital transformation agency, and served as managing director of innovation following its acquisition. Perley serves on MD Anderson's advisory committee, supports women-owned businesses through Ncourage investment group, and was recognized as one of MM+M's Women to Watch 2024. She is a dedicated mother of two children and enjoys refurbishing her 1972 International Scout in her free time.

### NEGOTIATE TO YES

Join this interactive workshop designed to help women master workplace negotiations and create win-win outcomes. Learn essential strategies to navigate tough conversations, overcome unique challenges around self-advocacy, overcome gender and societal biases, and confidently secure what you deserve. Use key concepts like BATNA and ZOPA to drive successful negotiations and lead your career with confidence and clarity.



RICHA BANSAL

**Founder, Executive Career Coach, Pinkcareers**

Richa Bansal is an executive career coach with a decade of experience excelling in the corporate world on her own terms. She has worked with Amazon, delivering programs to hire the best talent, and with Schlumberger, leading a large engineering team to deliver multi-million dollar projects. Through her career, Bansal has witnessed the struggles of women navigating the corporate ladder. In 2019, she founded Pinkcareers to help ambitious professionals accelerate their career growth. She has partnered with the Canadian government, numerous universities and over 20 Fortune 500 companies to deliver leadership programs. Bansal earned a bachelor's degree from IIT Delhi in India, a master's degree from Purdue University and an MBA from Rice Business. When she is not working, she loves to travel with her husband and two little boys.

### LEADING THE WAY TOWARD HEALTHY RESILIENCE

In this workshop, Dr. Danielle D. King will present and facilitate discussion of strategies for leaders to identify and facilitate sustainable and functional forms of resilience. Science-based insights and practical tools will be offered. The "why" for this process will also be discussed, to support an in-depth understanding of employee resilience.



DANIELLE D. KING, PH.D.

**Associate Professor of Psychology and Associate Dean of Graduate and Postdoctoral Studies, Rice University**

Danielle King is an associate professor of organizational psychology and the associate dean of graduate and postdoctoral studies at Rice University. Her research focuses on employee resilience, thriving, resources, voice and stigma. Her work has been funded by the National Science Foundation and has been published in both peer-reviewed scientific journals, such as the Journal of Applied Psychology, and in popular media outlets, including Harvard Business Review. Her teaching and consulting portfolio has focused on both individual and team leadership, inclusion and more. In her primary roles, she works to foster safe, supportive, empowering and intellectually stimulating environments for students. King received her bachelor's degree in psychology from Spelman College and her master's degree and Ph.D. in organizational psychology from Michigan State University.

## BOLD LEADERSHIP: STRATEGIES FOR ASSERTIVENESS

Discover the power of confident communication and boundary-setting in leadership. This session provides practical workplace-tested tools to help participants express ideas clearly, navigate challenging situations, assert their presence effectively and make a strong leadership impact.



**MARIE MYERS**

**Executive Vice President & Chief Financial Officer, Hewlett Packard Enterprise**

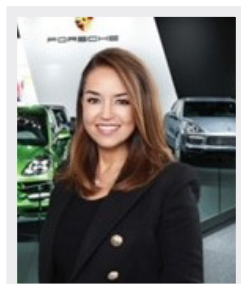
Marie Myers is the executive vice president and chief financial officer at Hewlett Packard Enterprise. She is a strategic and visionary CFO known for making financial decisions that fuel innovation and performance. Prior to this role, she held various roles at HP Inc., including CFO, chief transformation officer, global controller and Americas CFO of the personal systems business unit. Myers has been named to many lists of influential people, including Top 20 Most Powerful Businesswomen in Texas, Top 40 Under 40 in Finance, Top 30 Influential Women of Houston and more. She serves on the board of directors for Qualcomm Incorporated and the advisory boards at the University of St. Thomas in Houston and the University of Queensland in America, Inc. Myers earned a Bachelor of Arts in political science and a Bachelor of Economics from the University of Queensland in Brisbane, Australia, and an MBA from the University of St. Thomas in Houston.



**ABBY ALFORD**

**Vice President, CBRE**

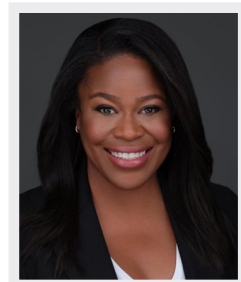
Abby Alford, vice president at CBRE, is a seasoned real estate professional specializing in strategic real estate consulting and brokerage services nationwide. With over 12 years of experience, her specialties include corporate headquarter office leases, site selection, lease restructuring, and land asset acquisitions and dispositions. Alford is deeply committed to community engagement and proudly serves on the board of directors for Habitat for Humanity Northwest Harris County, the Houston Office Leasing Brokers Association and the Greater Houston Women's Chamber of Commerce. As a passionate advocate for women's rights and empowerment, Alford dedicates her efforts to advancing opportunities for women in business and leadership. When not at work, she enjoys spending quality time with her friends and family – especially her two daughters, Emma and Madison.



**MARIA MONCADA ALAOU**

**Porsche Vice President, Sonic Automotive**

Maria Moncada Alaoui is the Porsche vice president for Sonic Automotive. Since entering the industry in an administrative role 25 years ago, she has advanced through leadership roles with BMW and Porsche. In her current role, she is responsible for the operational and financial oversight of all Porsche stores within Sonic Automotive, including customer and associate satisfaction. A long-time Houstonian, Alaoui is passionate about giving back to the community. She is involved in the World Affairs Council, Women Driving Business, Houston Food Bank and Houston Texans Foundation, and she serves on the advisory council of Altus Global Network. She also serves on the board of KnowAutism, as well as the Houston Children's Charity, to whose annual gala auction she has donated a vehicle for the past 15 years.



**KAFI SLAUGHTER**

**Managing Director, Private Client Advisor, Bank of America Private Bank**

Kafi C. Slaughter is managing director and private client advisor for Bank of America Private Bank with over 25 years of experience. She serves as a mentor to junior advisors and is a member of multiple organizations, including the Women's Team Member Network. As a cancer survivor, Slaughter is passionate about community health education and actively serves on the Advocacy Council of Baylor College of Medicine at Duncan Cancer Center. She is also a dedicated volunteer and a frequent speaker to industry organizations and nonprofits. Slaughter studied economics at Texas A&M University and earned a BBA in statistical and behavioral economics from the University of Alaska. She is a candidate for the certified private wealth advisor designation through Yale School of Management.



**STEPHANIE TSURU – Moderator**

**Cofounder and CEO, SheSpace**

Stephanie Tsuru spent 25 years in the healthcare industry before receiving a Master of Liberal Studies at Rice University. Energized by the strength and potential of women, she co-founded SheSpace, a female-focused collaborative work and programming space that helps advance women's social and professional networks and careers. Passionate about local philanthropy, Tsuru is president of the Houston Ballet Board and a recent co-chair of the Hermann Park Commons Capital Campaign with the Hermann Park Conservancy Board. She continues to indulge her fondness for lifelong learning by completing courses like the Rice Leadership Accelerator and the American Leadership Forum, Class LV. Outside of her empowering work with SheSpace, she is a proud wife, mother, and grandmother to five grandchildren.



## In over 35 countries, across 5 continents, Cheniere is providing the energy people need.

In 2024, we produced more than 600 tankers of liquefied natural gas and supplied enough energy to help power economies and keep hundreds of millions of people warm through the winter months.

At Cheniere, we're energizing a more secure future, which is why we are proud to support the 25th Annual Women in Leadership Conference and the business leaders of today and tomorrow.



[cheniere.com](https://cheniere.com)



# Use your powers for good

A career at HP can help you build the life you want. Our legendary culture—The HP Way—provides a framework for doing the right things while at work and within our communities.

Working with a global network of professionals, you'll have the support you need to achieve your highest potential and find solutions to reshape the way we'll work in the future. It's where your ideas, ambitions, fresh perspectives, and experiences are valued.

Proud sponsor of the 25<sup>th</sup> Women in Leadership Conference



## Working on Tomorrow's Energy Challenges Today

It takes a diverse team working collaboratively around the globe to bring experience, creativity, and perspective to today's energy challenges.

Aramco is proud to sponsor the 25<sup>th</sup> annual Rice University Women in Leadership Conference.

[americas.aramco.com](http://americas.aramco.com)

where energy is opportunity™



PUTTING  
OUR VALUES  
INTO ACTION

NRG is proud to recognize the Rice Women in Leadership Conference on years of innovation, influence, and inspiration.

Learn more at  
[nrg.com](http://nrg.com)

At **Phillips 66**, we Bring the Go in everything we do, every single day. Supporting our people, our environment and our communities is how we're living into our mission of providing energy and improving lives.

That's why we're proud to support the

# RICE WOMEN IN LEADERSHIP CONFERENCE.



**PROVIDING ENERGY.  
IMPROVING LIVES.**

@Phillips66Co



25-0003\_3 © 2025 Phillips 66 Company. All Rights Reserved.



**EMPOWER THE WOMEN AROUND YOU**



## Empowering Women Is What We Do.

SheSpace is a workspace, meeting, and event space where bold women gather to find their community, amplify their ambition, and propel their dreams forward.

Our mission is to create clear pathways for women to achieve their professional and personal goals while benefiting from the convenience of a female-focused space.

We are committed to understanding the needs of women and believe that every woman deserves an inclusive and inspiring workspace—one that fosters meaningful connections, reduces isolation, and encourages a healthy separation between professional and personal life.



[www.shespacehtx.com](http://www.shespacehtx.com)

**SHE SPACE**

# Supporting today's women in leadership.

—  
And tomorrow's.



Worley is a professional services company of energy, chemicals and resources experts. We're bridging two worlds, moving towards more sustainable energy sources, while helping to provide the energy, chemicals and resources society needs now.

We're proud to sponsor the 25th annual Women in Leadership Conference

WORLEY.COM



## chevron is proud to support the women in leadership conference

and celebrate the women who innovate, influence,  
and inspire others to make a difference in the  
business world and greater community



© 2020 Chevron. All rights reserved. IDC 0220-108626



## Women Power Progress.

Championing **women** who lead, innovate,  
and inspire in energy and beyond.

LIBERTYENERGY.COM




 **STEEL  
BLUE**  
WORK BOOTS

At Steel Blue, we design work boots made for women. Expertly crafted footwear built for comfort, durability, and support.


As the leader in women's work boots, we empower women in trades with gear that matches their ambition. When you're comfortable, you can focus on breaking barriers, not breaking in your boots.

Learn more at [steelblue.com](https://steelblue.com).



 **Vopak**

We are a proud sponsor of the Women in Leadership Conference, where trailblazers, changemakers, and future leaders come together to drive progress. Empowerment starts here.

 **Vopak  
America  
Women's  
Network**

[vopak.com](https://vopak.com)

We help the world flow forward >



# TOGETHER WE WILL LEAD THE FUTURE OF BUSINESS

 **RICE | BUSINESS**  
YOU BELONG HERE.



Multiple MBA Formats Available. Same Top-Ranked MBA Program. Apply Today. | [BUSINESS.RICE.EDU](https://BUSINESS.RICE.EDU)

# THANK YOU TO OUR SPONSORS!

## CEO

---



## VICE PRESIDENT

---



## DIRECTOR

---



## CONSULTANT

---



## COMMUNITY PARTNER

---

