



RICE | BUSINESS
YOU BELONG HERE.

Welcome



Agenda

- Rice Teams
- The MBA Journey – Requirements
- Rice Account and Email
- I-20 Process
- OISS Portal
- Next Steps
- FAQ

The Rice Teams and Acronyms

- RAO – Recruiting and Admissions Office
- Office of Academic Programs and Student Experience
- CDO – Career Development Office
- OISS – Office of International Students and Scholars

MBA Next Steps & Requirements

[Admitted Students Website](#)

[Student Application Portal](#)

ADMISSIONS

Pay Deposit

Official Test Scores

Official Transcripts
and Evaluations

Attend Events

PROGRAM

Onboarding Checklists

Remove Holds

Attend Launch

VISA PROCESS

OISS Process



MBA Visa Process Overview

Pay Deposit

Activate NetID and Email (starting when prompted – around March). Watch for two separate messages.

Create OISS Profile

Upload Documents (for I-20) - OISS starts processing I-20 around March

Attend Admitted Students Events (RAO – January - June)

Office of Academic Programs and Student Experience provides student life info (starting May/June)

Arrive on campus (7/1 onward) check in with OISS and Office of Academic Programs and Student Experience

Rice Account & Email

- ESTHER
 - Purpose: You will register* for your classes, pay your tuition, check your grades, fill out most of your course evaluations, etc.
- NetID and Email Activation
(helpdesk@rice.edu)
- Keep checking your application portal and email for updates
- RAO uses your application (personal) email to communicate
- OISS Portal invitations will be sent to your personal email address
- Office of Academic Programs and Student Experience uses your Rice email address

*You will be registered for your fall classes.

I-20 Process

- **Primary contact: OISS Team (oiss@rice.edu)**
- Pay your MBA deposit
- Starting in March, Rice record NetID and email created
- NetID created email sent
- Tech Pack* email sent (could be several days after NetID email)
- RAO sends admissions documents to OISS
- OISS starts sending invites to activate OISS Portal (from oiss@rice.edu) to personal emails
<https://oiss.rice.edu/oissportal>
- Upload necessary documents
- Documents verified, if all is well I-20 issued (starting in March/April) via email

*Deferred students might face delays

I-20 Process

- If a student intends to use a loan as proof of funding for the I-20, OISS requires confirmation of a fully approved loan (conditional loan approvals are not acceptable)
- F-1 students are not eligible for visas more than 120 days before their I-20 start date.
- **I-20 start date is scheduled for July 31, 2023.**
- Visa interviews
 - please give regular updates about your appointments to the OISS team and the Office of Academic Programs and Student Experience.

OISS and The OISS Portal

- Services: <https://oiss.rice.edu/>
- Portal: <https://oiss.rice.edu/oissportal>
- Review the list of necessary documents before you receive the portal activation email
- Activate portal account
- Upload documents
- OISS reviews documents (could take 2 weeks)
- Track progress on your OISS portal
- Once approved, I-20 will be emailed

OISS – Pre-Departure

- [Pre Arrival Information](#)
- Housing: <https://housing.rice.edu/graduate-housing>
- Complete your Immigration Check-in at OISS within 15 days of arrival in the U.S. Make your travel plans accordingly.

Next Steps - RAO

- Confirm your address when prompted.
- Keep checking your application portal for events, updates and program notices, you can also see which official materials you'll need to provide.
- BEFORE you start your program, the RAO needs official copies of*:
 - Test Scores
 - Transcripts
 - Credential Evaluations:
 - [SpanTran: The Evaluation Company](#)
 - [Educational Credential Evaluators](#)
 - [World Education Services](#)
- RAO [Admitted Student Website & Events](#)
 - [Connect with Your Class](#)

*You cannot start the program without providing your official materials.

Next Steps - Office of Academic Programs and Student Experience

- Program related questions
- RAO will start transitioning you to this team in late spring
- Complete your Pre-MBA courses (you'll need your NetID before you have access)
- Summer Scoop - Onboarding Newsletters (starts in June)
- B-Speak! – CDO initiative (profile and 10 hrs. of coaching)
- Onboarding Checklist – to do list
- International Student Launch (Orientation) – July 31 - August 4
- Launch Week – Starts on August 7

Frequently Asked Questions

- Registering for classes
 - The registrar department will enroll you in your fall courses. The Rice MBA program is cohort-based and the classes that you will take during your first year have been determined by Rice Business.
- Can I miss Launch?
 - No. Launch is a requirement with academic content that will tie to your grades throughout the year.
- Travel Restrictions
 - Watch for frequently changing updates. F1 visa students often are exempt.
 - [CDC Guidelines for travel.](#)

Frequently Asked Questions

- When can I enter the US?
 - F-1 students can enter the U.S. within a 30-day window leading up to I-20 start date.
- Transferring SEVIS
 - If a student is already in valid F-1 status in the U.S., the SEVIS record can be transferred, and a new I-20 can be issued without the student having to leave the country. However, the new academic program must begin within 5 months of the previous program's completion.

OUR RECRUITING AND ADMISSIONS TEAM



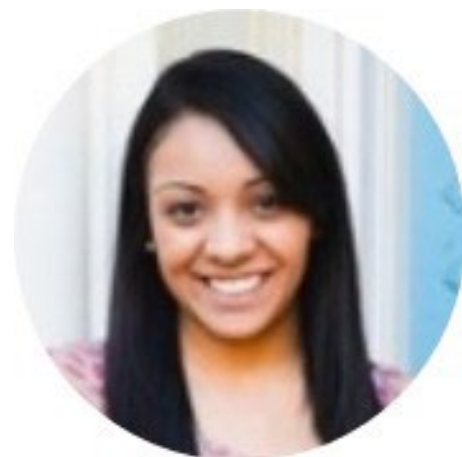
JESSICA KROM
ASSOCIATE DIRECTOR



JESSICA MORENO
ASSISTANT DIRECTOR OF
ADMISSIONS



MAGDA CRAIGE
SYSTEMS AND DATA
ANALYST



VIANEY RANGEL
ENROLLMENT DATA
ANALYST



RITA MILLER
RECRUITING AND
ADMISSIONS
COORDINATOR



ADDITIONAL QUESTIONS?

